



MAHARAJA AGRASEN INTERNATIONAL COLLEGE

NAAC Accredited B+

(Run By Shree Maharaja Agrasen Charitable Trust)
Affiliated to Pt. Ravishankar Shukla University, Raipur
Shree Ramnath Bhimsen Marg, Samta Colony, Raipur - 492001 (C.G.) INDIA
Contact us : 0771-4024459, 4066664, 9770971171
E-mail : connect@maicindia.com, Website : www.maicindia.com



2020 - 2021

Student Feedback Form

Commerce Department

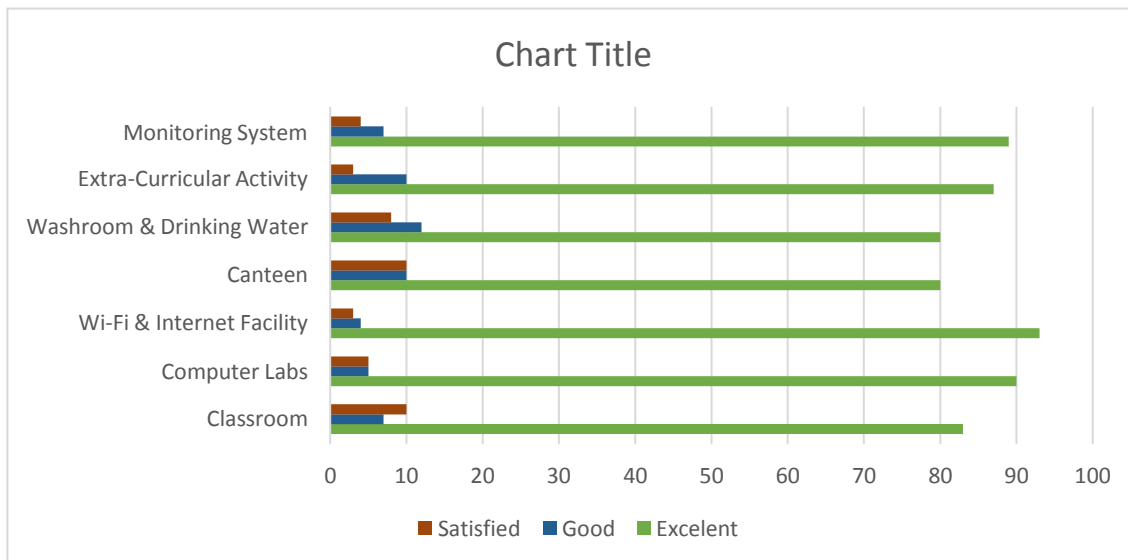
Learning & Teaching

S.No.	How satisfied are you with the student/s work performance in	Excelent	Good	Satisfied
1	Depth of the course content includin project work	83	11	6
2	Extent of covrage outcome	80	12	8
3	Applicability/Relevance to real life situation	89	10	1
4	Ledarning value	80	10	10
5	Clarity and relevance of textual reading material	87	5	8
6	Relevance of additional source material	86	10	4
7	Open to new ideas and learning new techniques	82	10	8
8	Are you happy with the overall performance of the college	86	10	4
9	Are you satisfied with the teaching methods and practices	80	10	10
10	Are you satisfied with quality of teching	82	10	8



Infrastructure

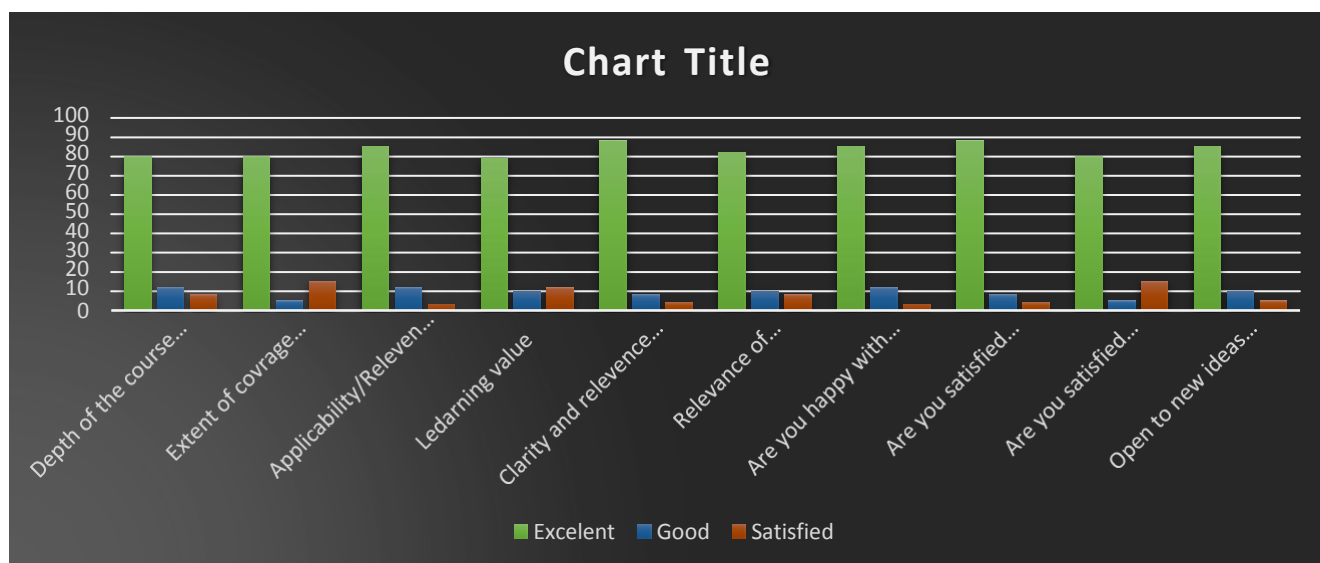
S.No.	How satisfied are you with the student/s work performance in	Excelent	Good	Satisfied
1	Classroom	83	7	10
2	Computer Labs	90	5	5
3	Wi-Fi & Internet Facility	93	4	3
4	Canteen	80	10	10
5	Washroom & Drinking Water	80	12	8
6	Extra-Curricular Activity	87	10	3
7	Monitoring System	89	7	4



Management Department

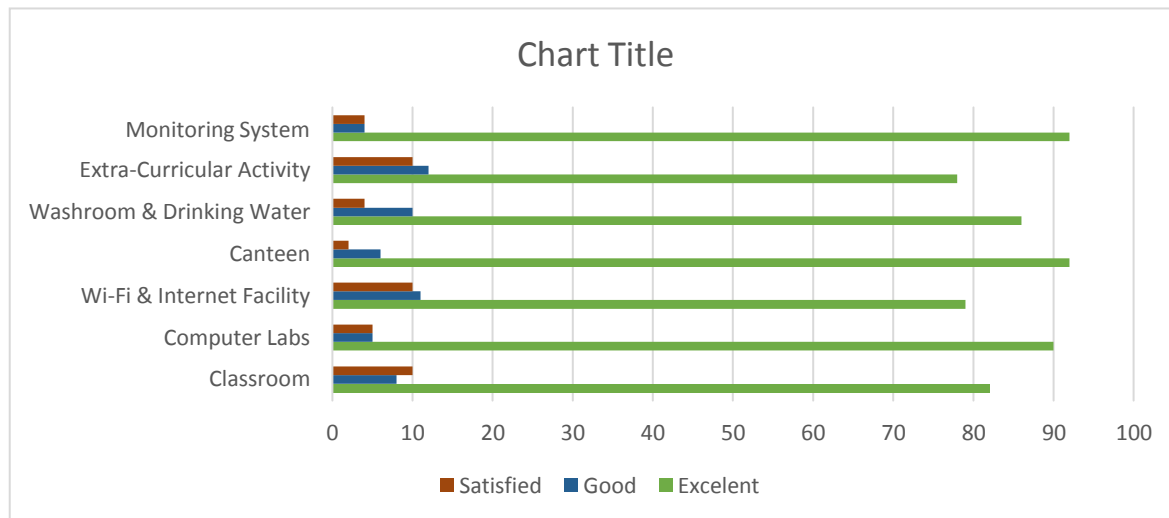
Learning & Teaching

S.No.	How satisfied are you with the student/s work performance in	Excelent	Good	Satisfied
1	Depth of the course content includin project work	80	12	8
2	Extent of covrage outcome	80	5	15
3	Applicability/Relevance to real life situation	85	12	3
4	Ledarning value	79	10	12
5	Clarity and relevance of textual reading material	88	8	4
6	Relevance of additional source material	82	10	8
7	Are you happy with the overall performance of the college	85	12	3
8	Are you satisfied with the teaching methods and practices	88	8	4
9	Are you satisfied with quality of teching	80	5	15
10	Open to new ideas and learning new techniques	85	10	5



Infrastructure

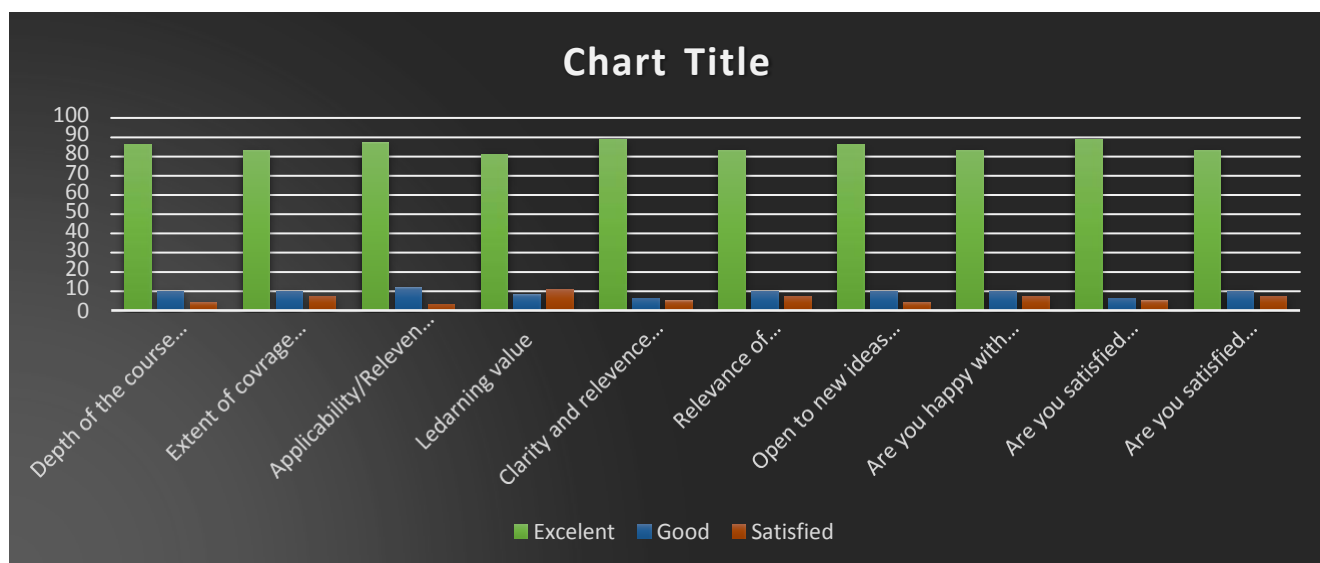
S.No.	How satisfied are you with the student/s work performance in	Excelent	Good	Satisfied
1	Classroom	82	8	10
2	Computer Labs	90	5	5
3	Wi-Fi & Internet Facility	79	11	10
4	Canteen	92	6	2
5	Washroom & Drinking Water	86	10	4
6	Extra-Curricular Activity	78	12	10
7	Monitoring System	92	4	4



Computer Application Department

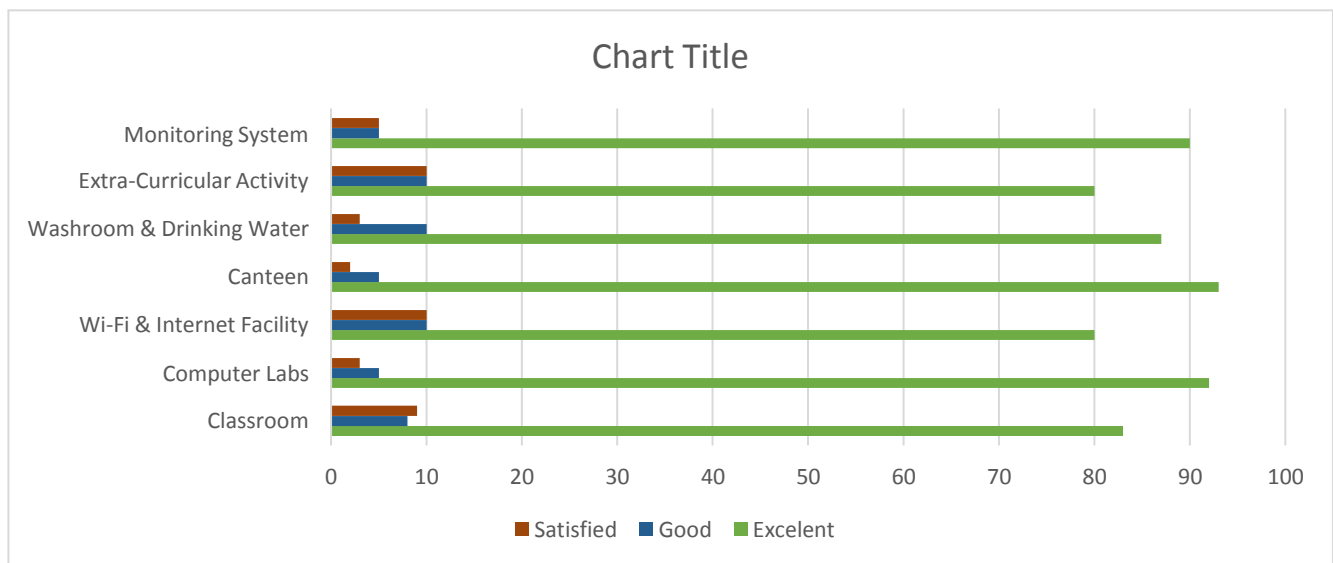
Learning & Teaching

S.No.	How satisfied are you with the student/s work performance in	Excelent	Good	Satisfied
1	Depth of the course content includin project work	86	10	4
2	Extent of covrage outcome	83	10	7
3	Applicability/Relevance to real life situation	87	12	3
4	Ledarning value	81	8	11
5	Clarity and relevance of textual reading material	89	6	5
6	Relevance of additional source material	83	10	7
7	Open to new ideas and learning new techniques	86	10	4
8	Are you happy with the overall performance of the college	83	10	7
9	Are you satisfied with the teaching methods and practices	89	6	5
10	Are you satisfied with quality of teching	83	10	7



Infrastructure

S.No.	How satisfied are you with the student/s work performance in	Excelent	Good	Satisfied
1	Classroom	83	8	9
2	Computer Labs	92	5	3
3	Wi-Fi & Internet Facility	80	10	10
4	Canteen	93	5	2
5	Washroom & Drinking Water	87	10	3
6	Extra-Curricular Activity	80	10	10
7	Monitoring System	90	5	5



Computer Science Department

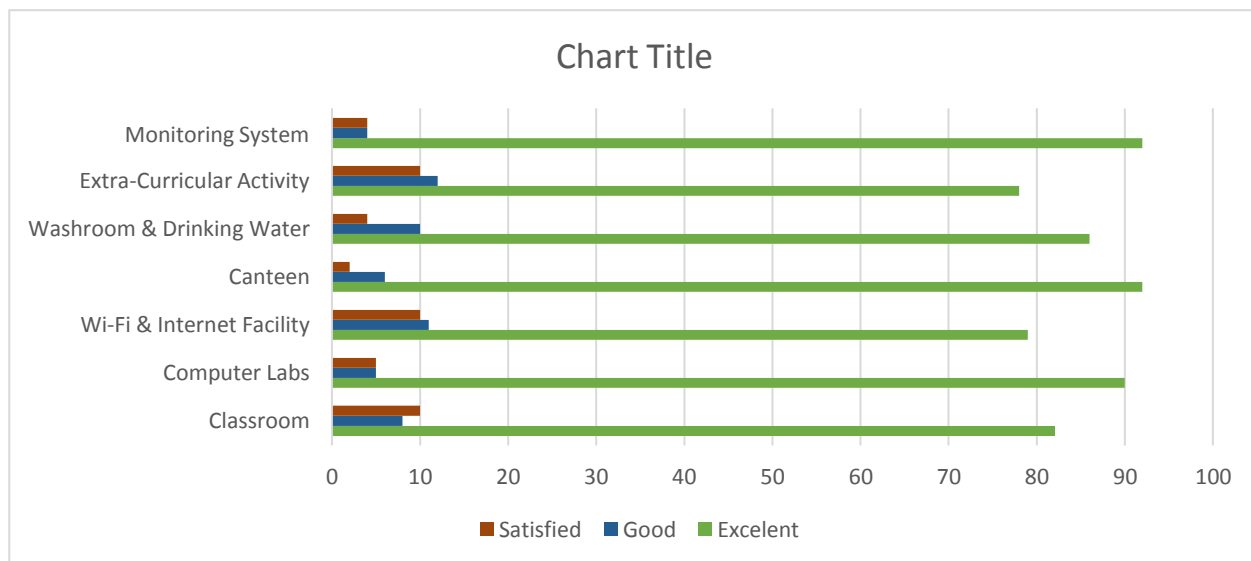
Learning & Teaching

S.No.	How satisfied are you with the student/s work performance in	Excelent	Good	Satisfied
1	Depth of the course content includin project work	86	10	4
2	Extent of covrage outcome	83	10	7
3	Applicability/Relevance to real life situation	87	12	3
4	Ledarning value	81	8	11
5	Clarity and relevance of textual reading material	89	6	5
6	Open to new ideas and learning new techniques	85	10	5
7	Relevance of additional source material	83	10	7
8	Are you happy with the overall performance of the college	89	6	5
9	Are you satisfied with the teaching methods and practices	83	10	7
10	Are you satisfied with quality of teching	86	10	4



Infrastructure

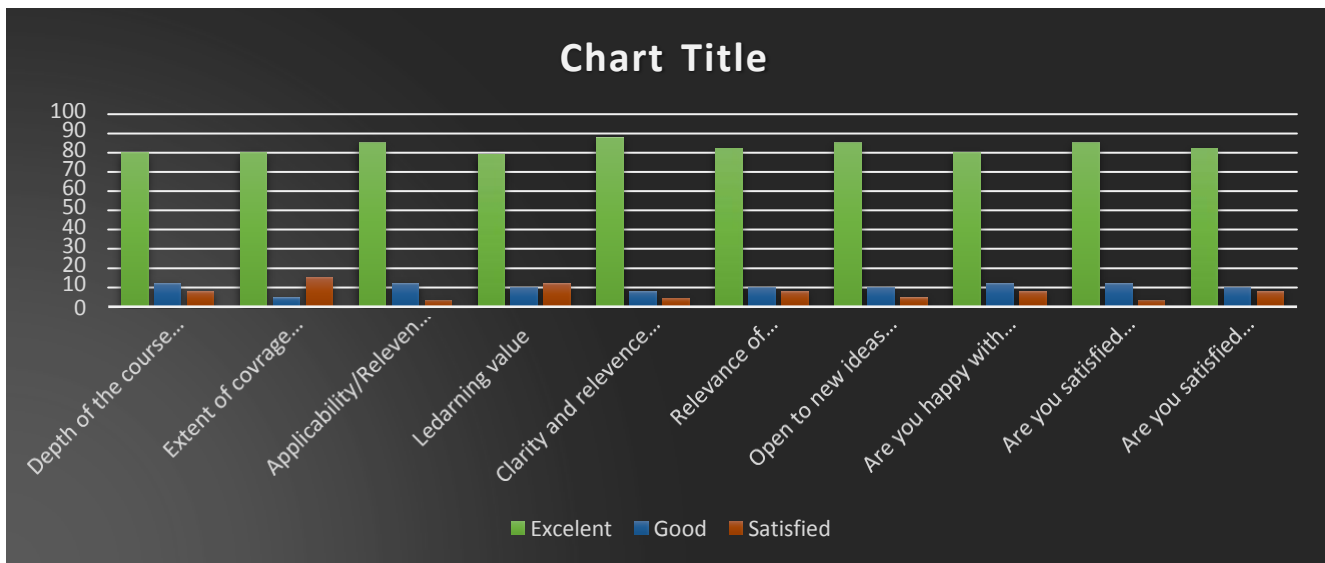
S.No.	How satisfied are you with the student/s work performance in	Excelent	Good	Satisfied
1	Classroom	82	8	10
2	Computer Labs	90	5	5
3	Wi-Fi & Internet Facility	79	11	10
4	Canteen	92	6	2
5	Washroom & Drinking Water	86	10	4
6	Extra-Curricular Activity	78	12	10
7	Monitoring System	92	4	4



Interior Design Department

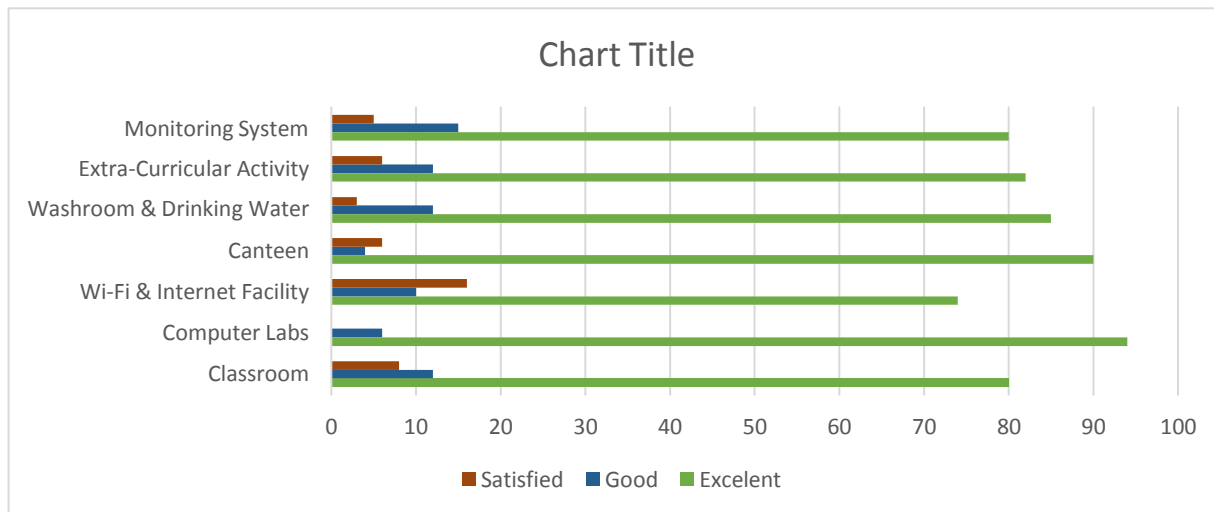
Learning & Teaching

S.No.	How satisfied are you with the student/s work performance in	Excelent	Good	Satisfied
1	Depth of the course content includin project work	80	12	8
2	Extent of covrage outcome	80	5	15
3	Applicability/Relevance to real life situation	85	12	3
4	Ledarning value	79	10	12
5	Clarity and relevance of textual reading material	88	8	4
6	Relevance of additional source material	82	10	8
7	Open to new ideas and learning new techniques	85	10	5
8	Are you happy with the overall performance of the college	80	12	8
9	Are you satisfied with the teaching methods and practices	85	12	3
10	Are you satisfied with quality of teching	82	10	8



Infrastructure

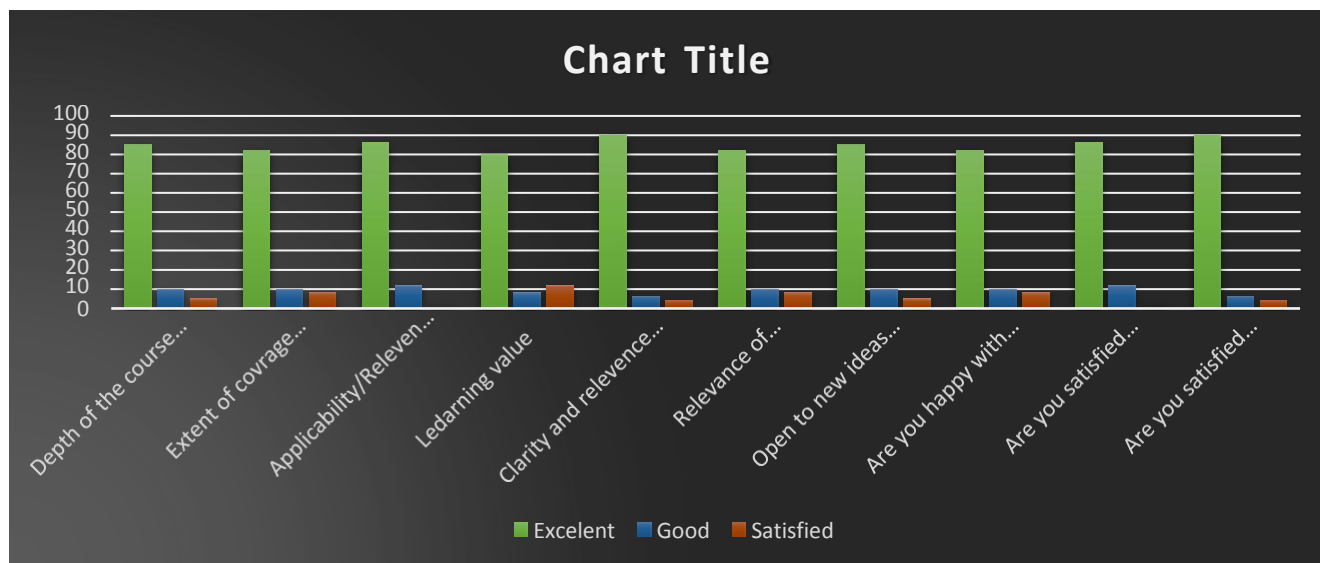
S.No.	How satisfied are you with the student/s work performance in	Excelent	Good	Satisfied
1	Classroom	80	12	8
2	Computer Labs	94	6	0
3	Wi-Fi & Internet Facility	74	10	16
4	Canteen	90	4	6
5	Washroom & Drinking Water	85	12	3
6	Extra-Curricular Activity	82	12	6
7	Monitoring System	80	15	5



Education Department

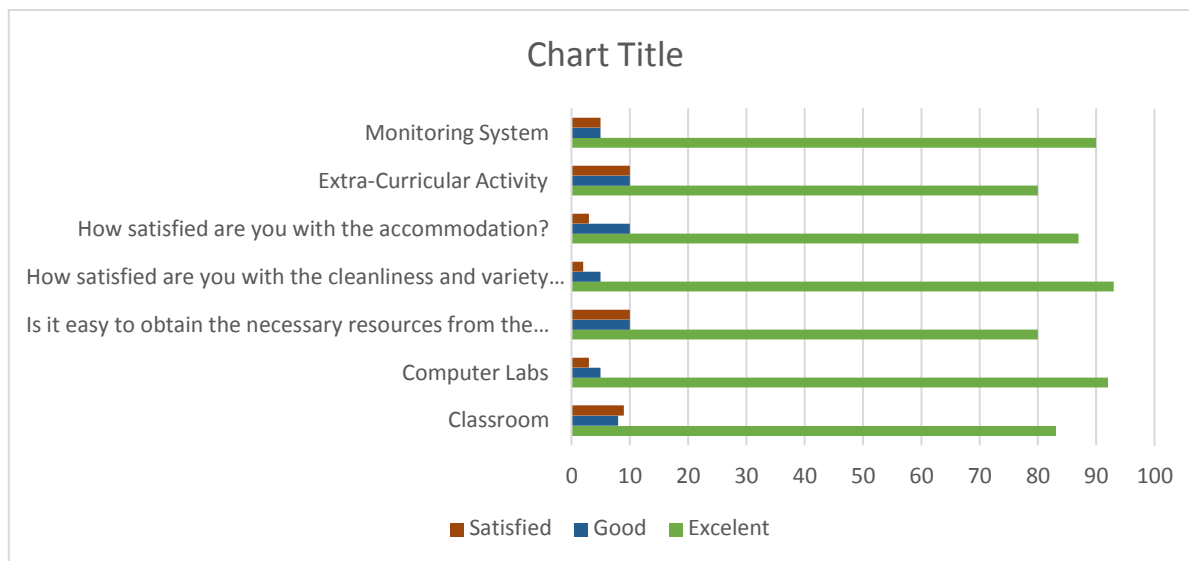
Learning & Teaching

S.No.	How satisfied are you with the student/s work performance in	Excelent	Good	Satisfied
1	Depth of the course content includin project work	85	10	5
2	Extent of covrage outcome	82	10	8
3	Applicability/Relevance to real life situation	86	12	2
4	Ledarning value	80	8	12
5	Clarity and relevance of textual reading material	90	6	4
6	Relevance of additional source material	82	10	8
7	Open to new ideas and learning new techniques	85	10	5
8	Are you happy with the overall performance of the college	82	10	8
9	Are you satisfied with the teaching methods and practices	86	12	2
10	Are you satisfied with quality of teching	90	6	4



Infrastructure

S.No.	How satisfied are you with the student/s work performance in	Excelent	Good	Satisfied
1	Classroom	83	8	9
2	Computer Labs	92	5	3
3	Is it easy to obtain the necessary resources from the college library?	80	10	10
4	How satisfied are you with the cleanliness and variety of food items	93	5	2
5	How satisfied are you with the accommodation?	87	10	3
6	Extra-Curricular Activity	80	10	10
7	Monitoring System	90	5	5





MAHARAJA AGRASEN INTERNATIONAL COLLEGE

NAAC Accredited B+

(Run By Shree Maharaja Agrasen Charitable Trust)
Affiliated to Pt. Ravishankar Shukla University, Raipur
Shree Ramnath Bhimsen Marg, Samta Colony, Raipur - 492001 (C.G.) INDIA
Contact us : 0771-4024459, 4066664, 9770971171
E-mail : connect@maicindia.com, Website : www.maicindia.com

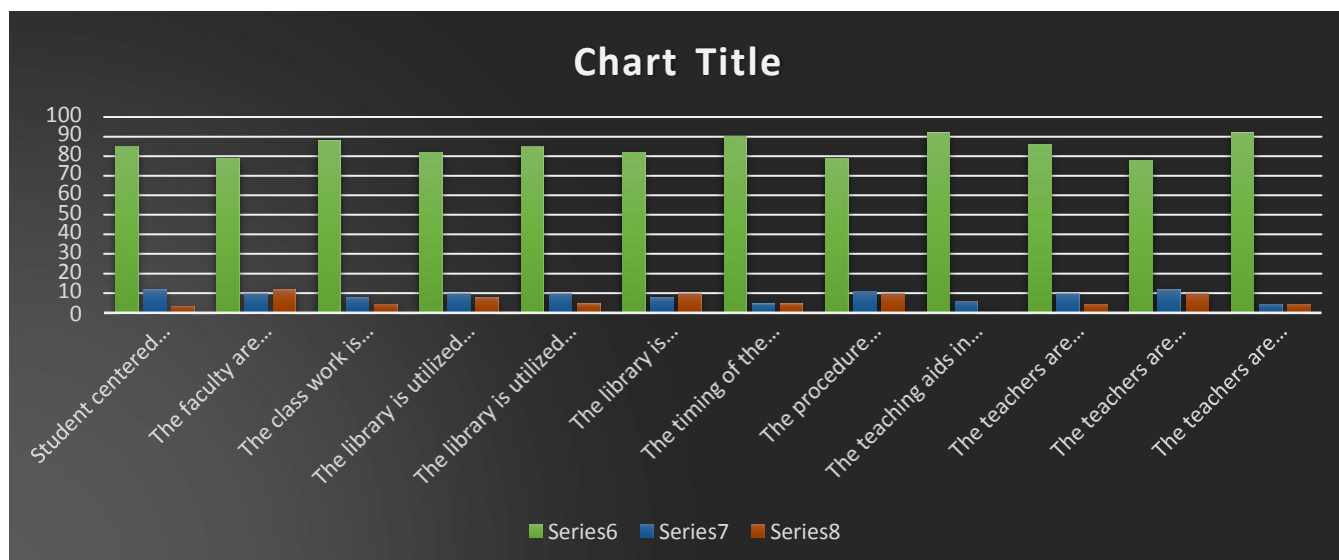


2020 - 2021

Teacher Feedback Form

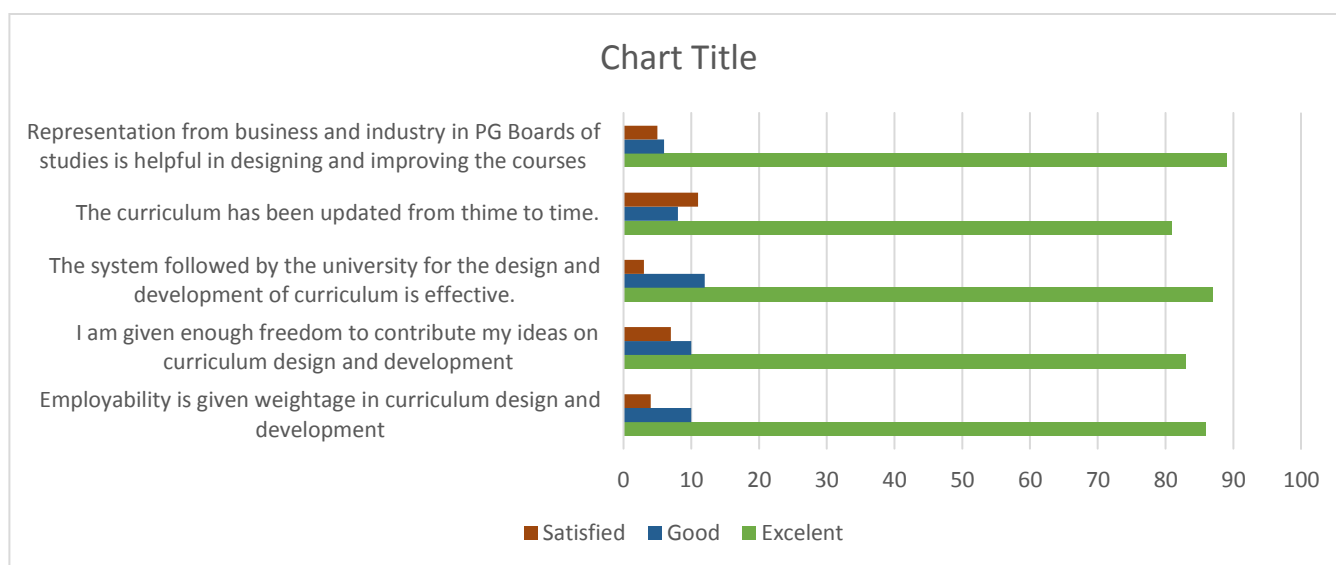
Commerce Department

S.No.	How satisfied are you with the student/s work performance in	Excelent	Good	Satisfied
1	The admission process adopted by the University effective.	80	12	8
2	The University is able to attract meritorious students.	80	5	15
3	Student centered learning resourses are available in the University	85	12	3
4	The faculty are updating their knowledge and skills	79	10	12
5	The class work is taking place as per schedule	88	8	4
6	The library is utilized optimally by the faculty.	82	10	8
7	The library is utilized optimally by the research scholars	85	10	5
8	The library is managed effectively	82	8	10
9	The timing of the Library are convenient	90	5	5
10	The procedure followed for acquiring new books and journals	79	11	10
11	The teaching aids in the department are sufficient and up to date.	92	6	2
12	The teachers are supported with adequate learning resources	86	10	4
13	The teachers are encouraged to carry out research.	78	12	10
14	The teachers are encouraged to organize	92	4	4



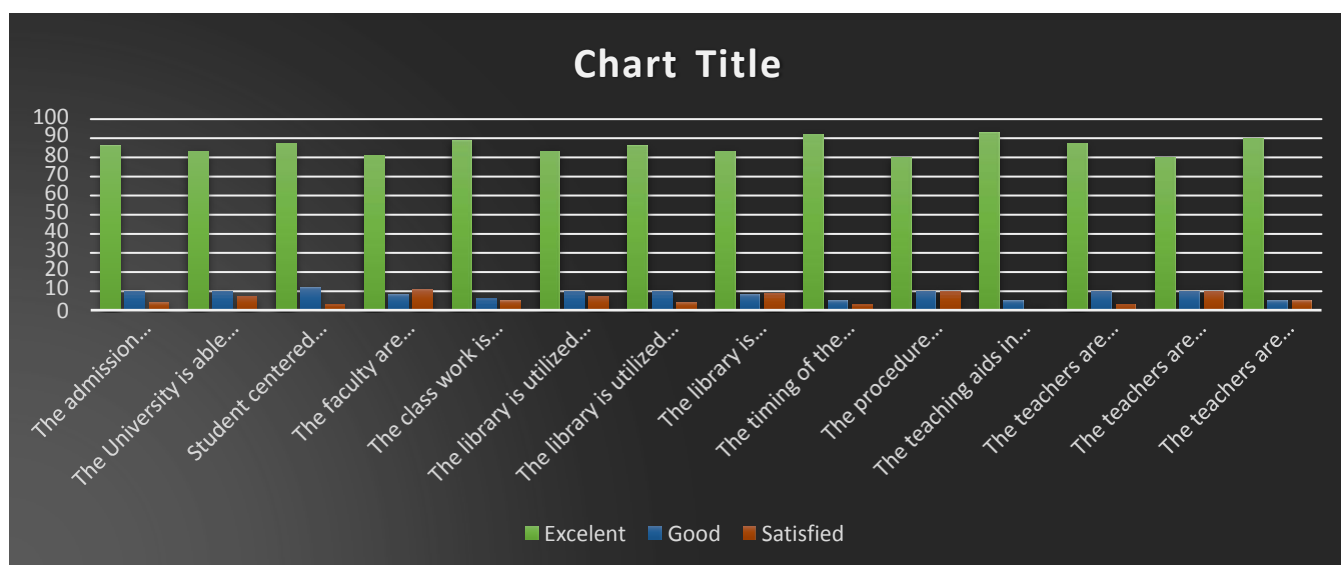
II - Curriculum Design & Development

S.No.	How satisfied are you with the student/s work performance in	Excelent	Good	Satisfied
1	Employability is given weightage in curriculum design and	86	10	4
2	I am given enough freedom to contribute my ideas on curriculum	83	10	7
3	The system followed by the university for the design and	87	12	3
4	The curriculum has been updated from thime to time.	81	8	11
5	Representation from business and industry in PG Boards of studies	89	6	5



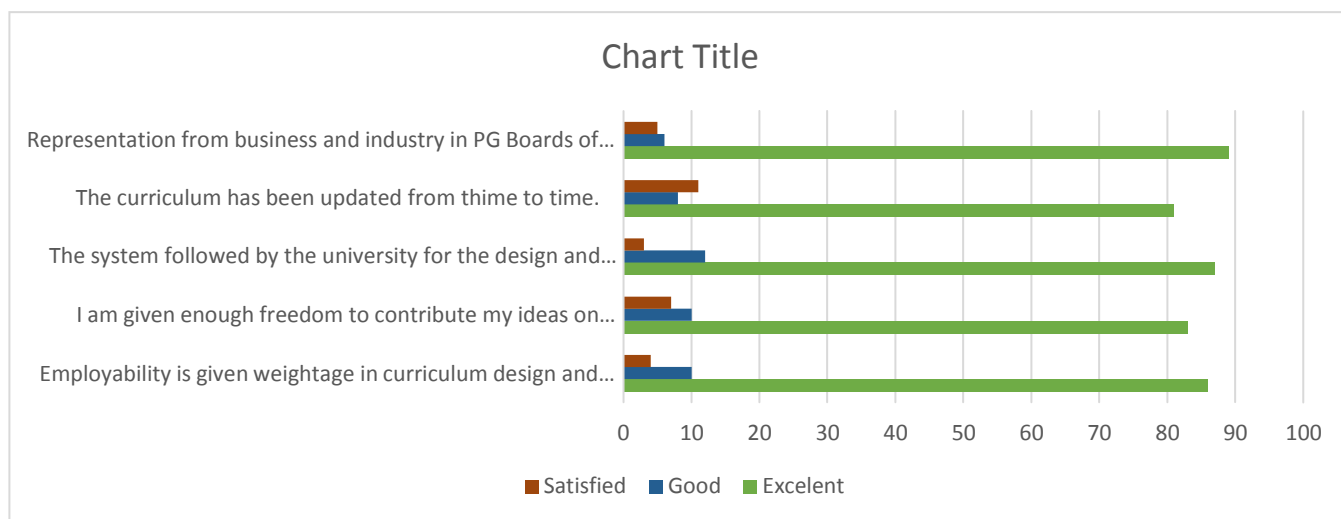
Management Department

S.No.	How satisfied are you with the student/s work performance in	Excelent	Good	Satisfied
1	The admission process adopted by the University effective.	86	10	4
2	The University is able to attract meritorious students.	83	10	7
3	Student centered learning resourses are available in the University	87	12	3
4	The faculty are updating their knowledge and skills	81	8	11
5	The class work is taking place as per schedule	89	6	5
6	The library is utilized optimally by the faculty.	83	10	7
7	The library is utilized optimally by the research scholars	86	10	4
8	The library is managed effectively	83	8	9
9	The timing of the Library are convenient	92	5	3
10	The procedure followed for acquiring new books and journals	80	10	10
11	The teaching aids in the department are sufficient and up to date.	93	5	2
12	The teachers are supported with adequate learning resources	87	10	3
13	The teachers are encouraged to carry out research.	80	10	10
14	The teachers are encouraged to organize	90	5	5



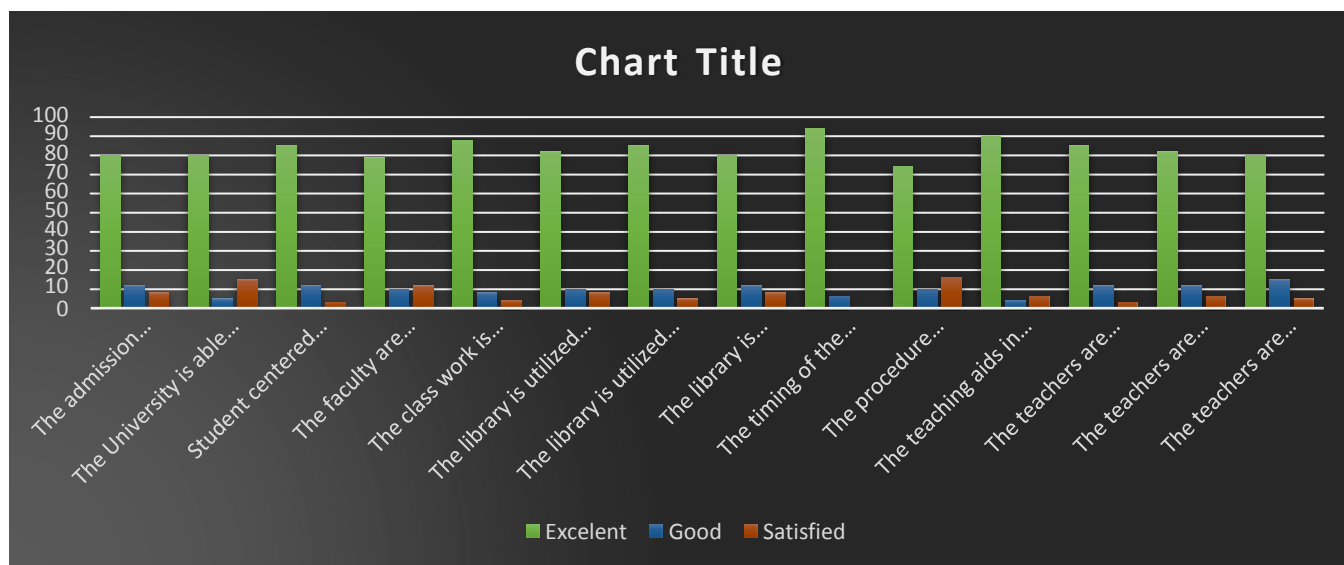
II - Curriculum Design & Development

S.No.	How satisfied are you with the student/s work performance in	Excelent	Good	Satisfied
1	Employability is given weightage in curriculum design and	86	10	4
2	I am given enough freedom to contribute my ideas on curriculum	83	10	7
3	The system followed by the university for the design and	87	12	3
4	The curriculum has been updated from thime to time.	81	8	11
5	Representation from business and industry in PG Boards of studies	89	6	5



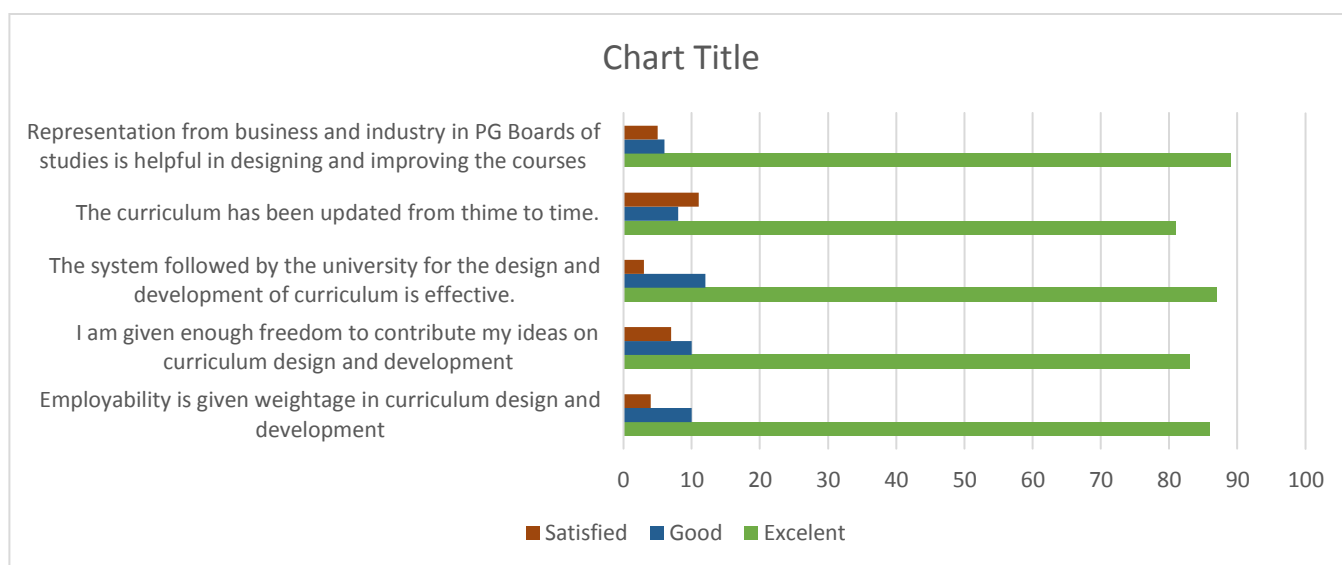
Computer Application Department

S.No.	How satisfied are you with the student/s work performance in	Excelent	Good	Satisfied
1	The admission process adopted by the University effective.	80	12	8
2	The University is able to attract meritorious students.	80	5	15
3	Student centered learning resourses are available in the University	85	12	3
4	The faculty are updating their knowledge and skills	79	10	12
5	The class work is taking place as per schedule	88	8	4
6	The library is utilized optimally by the faculty.	82	10	8
7	The library is utilized optimally by the research scholars	85	10	5
8	The library is managed effectively	80	12	8
9	The timing of the Library are convenient	94	6	0
10	The procedure followed for acquiring new books and journals	74	10	16
11	The teaching aids in the department are sufficient and up to date.	90	4	6
12	The teachers are supported with adequate learning resources	85	12	3
13	The teachers are encouraged to carry out research.	82	12	6
14	The teachers are encouraged to organize	80	15	5



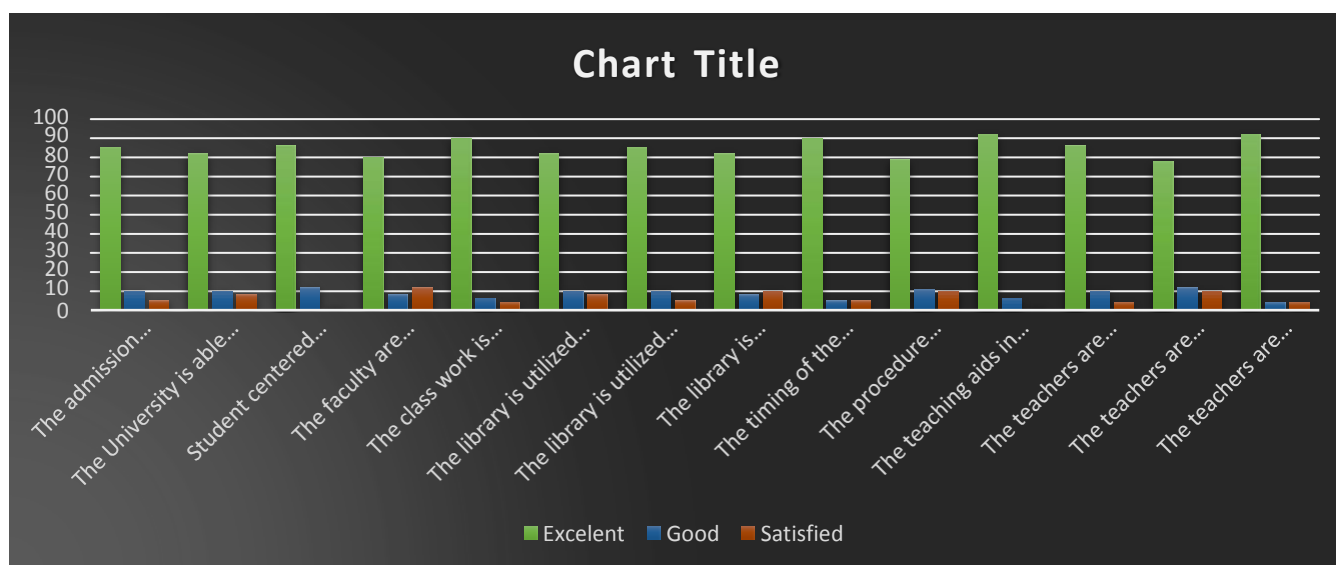
II - Curriculum Design & Development

S.No.	How satisfied are you with the student/s work performance in	Excelent	Good	Satisfied
1	Employability is given weightage in curriculum design and	86	10	4
2	I am given enough freedom to contribute my ideas on curriculum	83	10	7
3	The system followed by the university for the design and	87	12	3
4	The curriculum has been updated from thime to time.	81	8	11
5	Representation from business and industry in PG Boards of studies	89	6	5



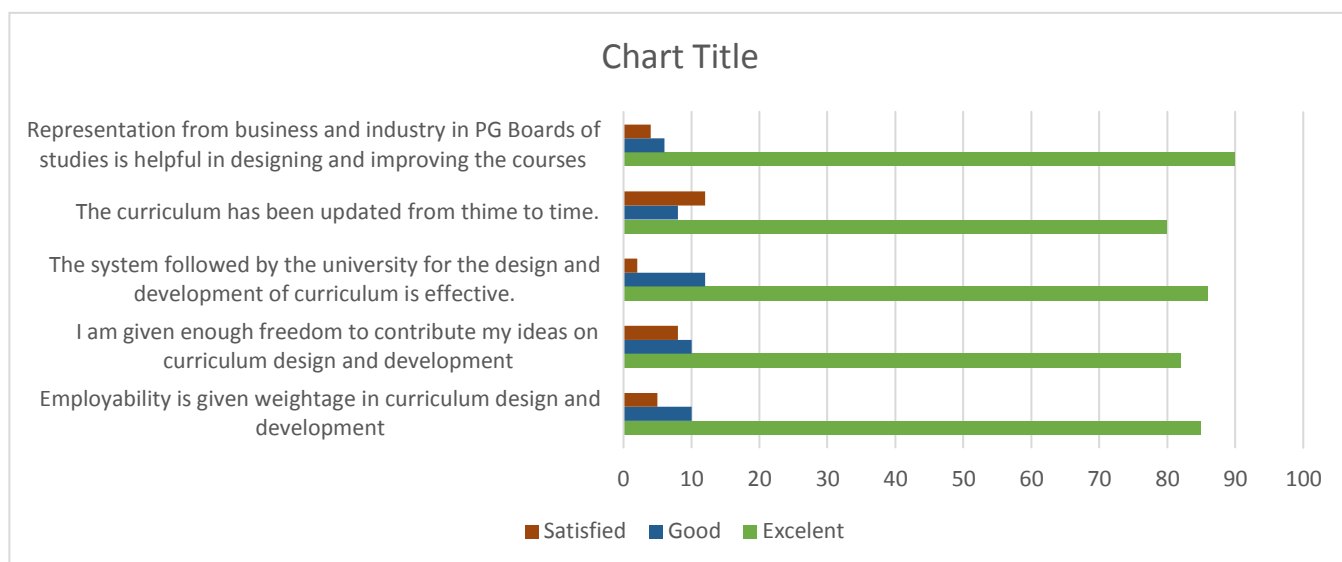
Computer Science Department

S.No.	How satisfied are you with the student/s work performance in	Excelent	Good	Satisfied
1	The admission process adopted by the University effective.	85	10	5
2	The University is able to attract meritorious students.	82	10	8
3	Student centered learning resourses are available in the University	86	12	2
4	The faculty are updating their knowledge and skills	80	8	12
5	The class work is taking place as per schedule	90	6	4
6	The library is utilized optimally by the faculty.	82	10	8
7	The library is utilized optimally by the research scholars	85	10	5
8	The library is managed effectively	82	8	10
9	The timing of the Library are convenient	90	5	5
10	The procedure followed for acquiring new books and journals	79	11	10
11	The teaching aids in the department are sufficient and up to date.	92	6	2
12	The teachers are supported with adequate learning resources	86	10	4
13	The teachers are encouraged to carry out research.	78	12	10
14	The teachers are encouraged to organize	92	4	4



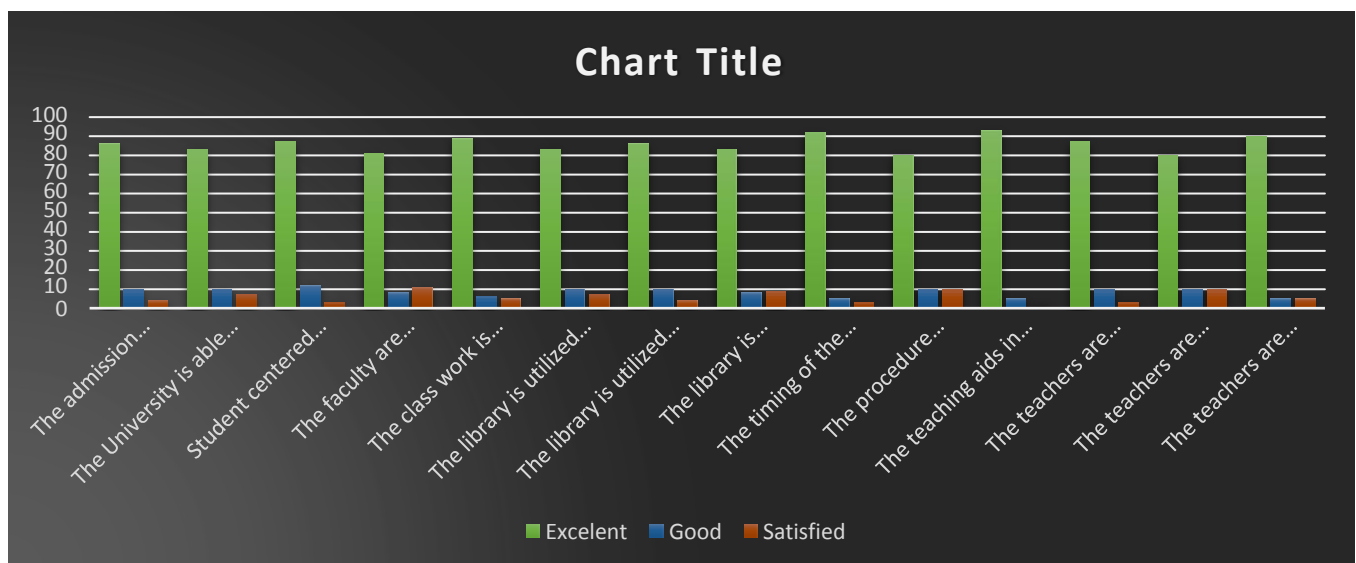
II - Curriculum Design & Development

S.No.	How satisfied are you with the student/s work performance in	Excellent	Good	Satisfied
1	Employability is given weightage in curriculum design and	85	10	5
2	I am given enough freedom to contribute my ideas on curriculum	82	10	8
3	The system followed by the university for the design and	86	12	2
4	The curriculum has been updated from thime to time.	80	8	12
5	Representation from business and industry in PG Boards of studies	90	6	4



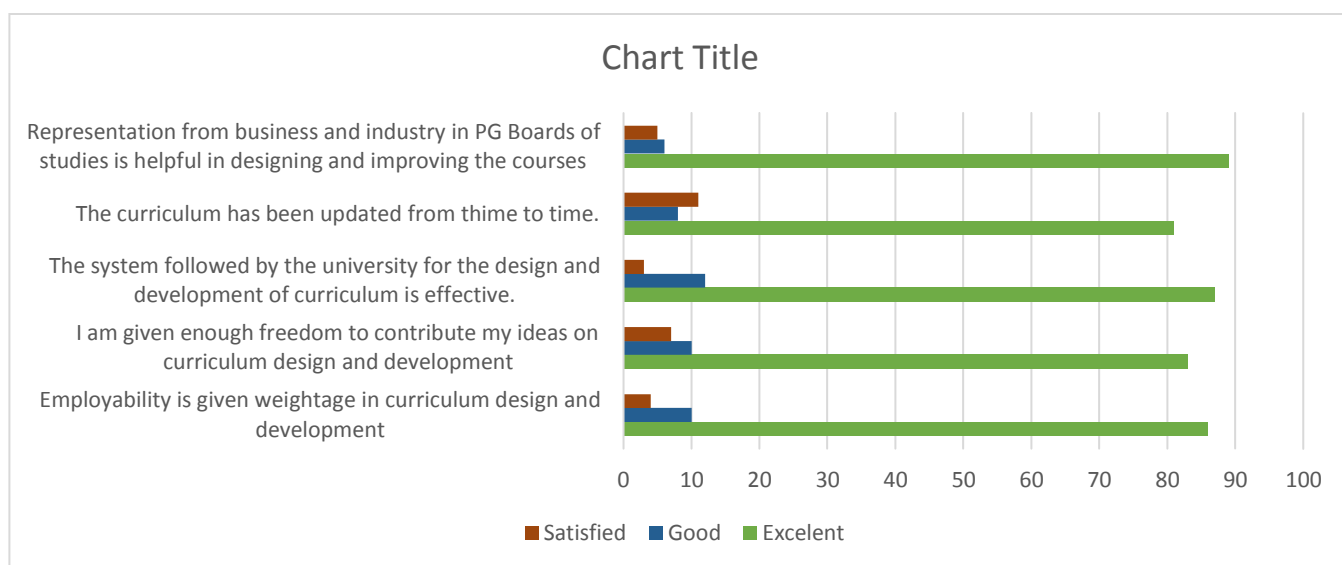
Interior Design Department

S.No.	How satisfied are you with the student/s work performance in	Excelent	Good	Satisfied
1	The admission process adopted by the University effective.	86	10	4
2	The University is able to attract meritorious students.	83	10	7
3	Student centered learning resourses are available in the University	87	12	3
4	The faculty are updating their knowledge and skills	81	8	11
5	The class work is taking place as per schedule	89	6	5
6	The library is utilized optimally by the faculty.	83	10	7
7	The library is utilized optimally by the research scholars	86	10	4
8	The library is managed effectively	83	8	9
9	The timing of the Library are convenient	92	5	3
10	The procedure followed for acquiring new books and journals	80	10	10
11	The teaching aids in the department are sufficient and up to date.	93	5	2
12	The teachers are supported with adequate learning resources	87	10	3
13	The teachers are encouraged to carry out research.	80	10	10
14	The teachers are encouraged to organize	90	5	5



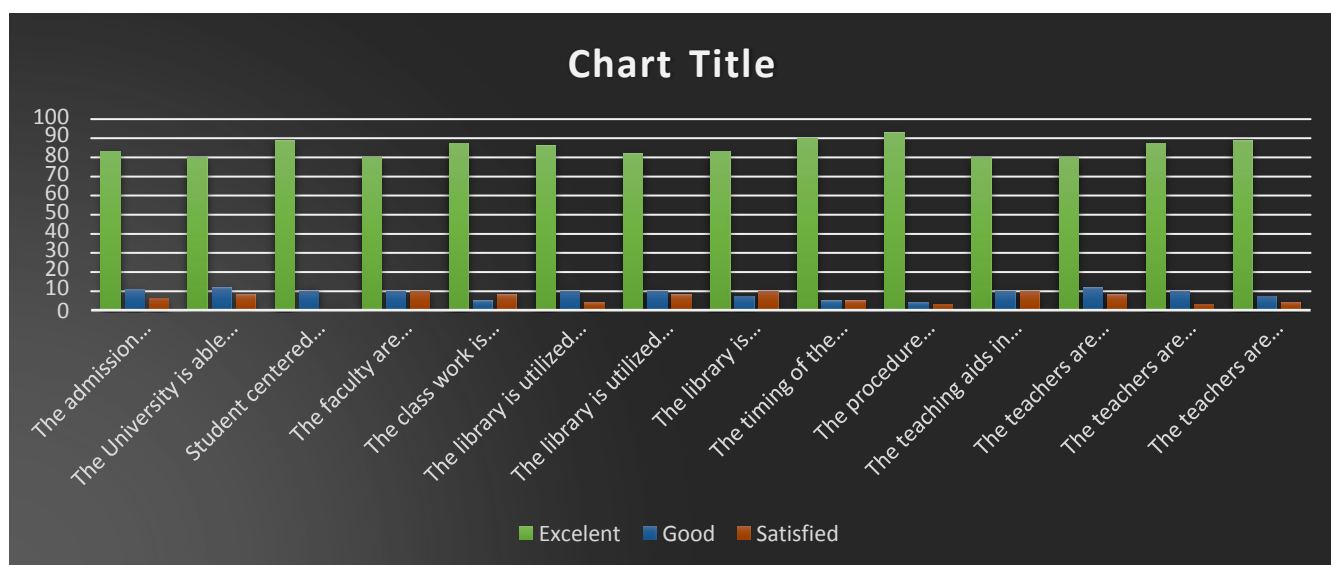
II - Curriculum Design & Development

S.No.	How satisfied are you with the student/s work performance in	Excelent	Good	Satisfied
1	Employability is given weightage in curriculum design and	86	10	4
2	I am given enough freedom to contribute my ideas on curriculum	83	10	7
3	The system followed by the university for the design and	87	12	3
4	The curriculum has been updated from thime to time.	81	8	11
5	Representation from business and industry in PG Boards of studies	89	6	5



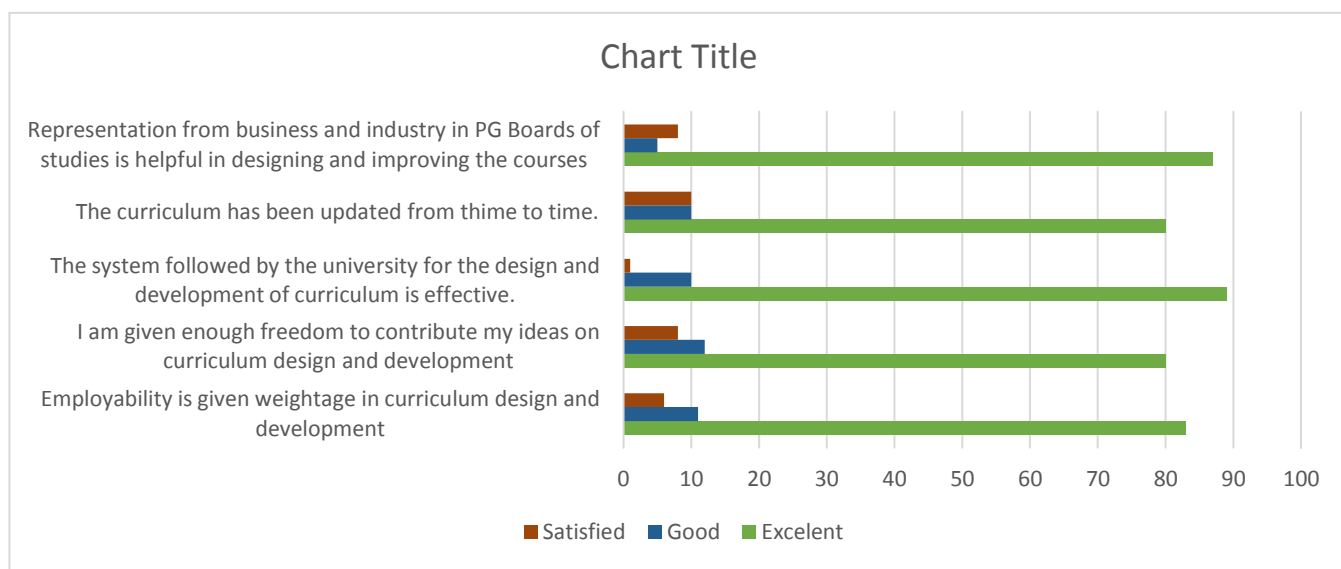
Education Department

S.No.	How satisfied are you with the student/s work performance in	Excelent	Good	Satisfied
1	The admission process adopted by the University effective.	83	11	6
2	The University is able to attract meritorious students.	80	12	8
3	Student centered learning resourses are available in the University	89	10	1
4	The faculty are updating their knowledge and skills	80	10	10
5	The class work is taking place as per schedule	87	5	8
6	The library is utilized optimally by the faculty.	86	10	4
7	The library is utilized optimally by the research scholars	82	10	8
8	The library is managed effectively	83	7	10
9	The timing of the Library are convenient	90	5	5
10	The procedure followed for acquiring new books and journals	93	4	3
11	The teaching aids in the department are sufficient and up to date.	80	10	10
12	The teachers are supported with adequate learning resources	80	12	8
13	The teachers are encouraged to carry out research.	87	10	3
14	The teachers are encouraged to organize	89	7	4



II - Curriculum Design & Development

S.No.	How satisfied are you with the student/s work performance in	Excellent	Good	Satisfied
1	Employability is given weightage in curriculum design and	83	11	6
2	I am given enough freedom to contribute my ideas on curriculum	80	12	8
3	The system followed by the university for the design and	89	10	1
4	The curriculum has been updated from thime to time.	80	10	10
5	Representation from business and industry in PG Boards of studies	87	5	8



|



MAHARAJA AGRASEN INTERNATIONAL COLLEGE

NAAC Accredited B+

(Run By Shree Maharaja Agrasen Charitable Trust)
Affiliated to Pt. Ravishankar Shukla University, Raipur
Shree Ramnath Bhimsen Marg, Samta Colony, Raipur - 492001 (C.G.) INDIA
Contact us : 0771-4024459, 4066664, 9770971171
E-mail : connect@maicindia.com, Website : www.maicindia.com



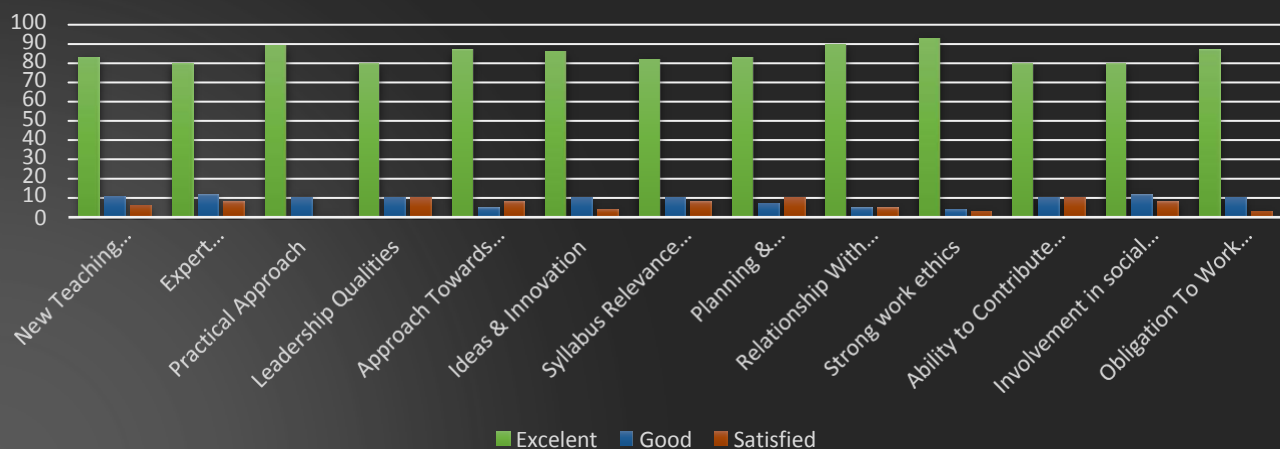
2020 - 2021

Employer Feedback Form

Commerce Department

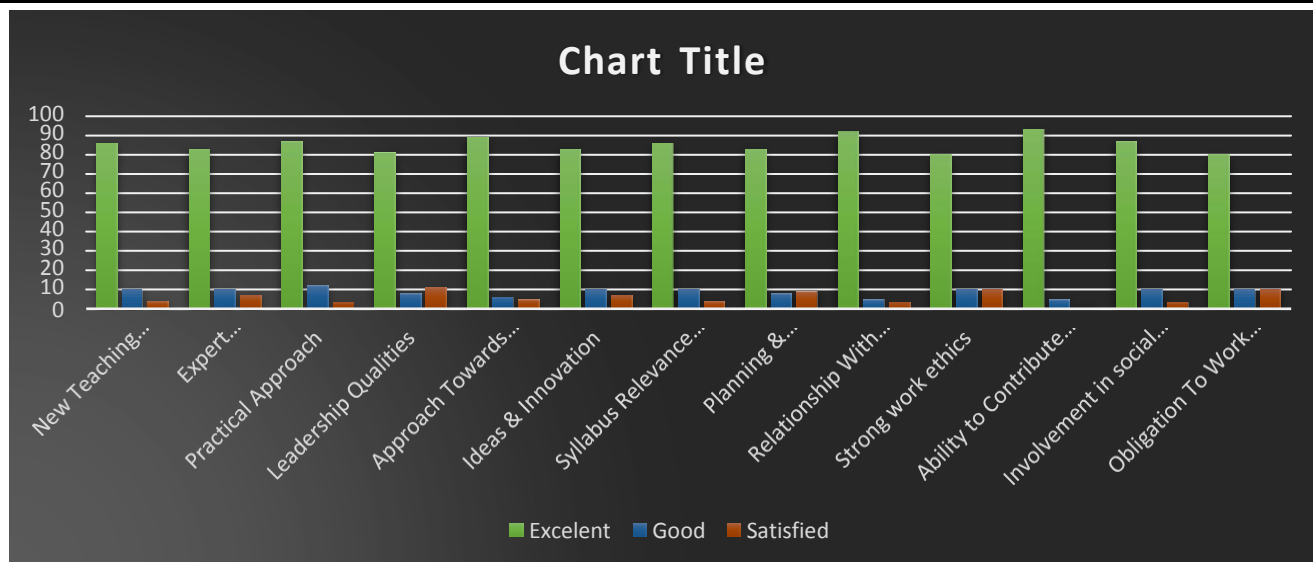
S.No.	How satisfied are you with the student/s work performance in	Excellent	Good	Satisfied
1	New Teaching Strategies	83	11	6
2	Expert communication skills	80	12	8
3	Practical Approach	89	10	1
4	Leadership Qualities	80	10	10
5	Approach Towards Teamwork	87	5	8
6	Ideas & Innovation	86	10	4
7	Syllabus Relevance To Job Profile	82	10	8
8	Planning & Organization Skills	83	7	10
9	Relationship With Seniors / Peers / Subordinates	90	5	5
10	Strong work ethics	93	4	3
11	Ability to Contribute To The Goal Of The Organization	80	10	10
12	Involvement in social activities	80	12	8
13	Obligation To Work Beyond Schedule If Required	87	10	3

Chart Title



Management Department

S.No.	How satisfied are you with the student/s work performance in	Excelent	Good	Satisfied
1	New Teaching Strategies	86	10	4
2	Expert communication skills	83	10	7
3	Practical Approach	87	12	3
4	Leadership Qualities	81	8	11
5	Approach Towards Teamwork	89	6	5
6	Ideas & Innovation	83	10	7
7	Syllabus Relevance To Job Profile	86	10	4
8	Planning & Organization Skills	83	8	9
9	Relationship With Seniors / Peers / Subordinates	92	5	3
10	Strong work ethics	80	10	10
11	Ability to Contribute To The Goal Of The Organization	93	5	2
12	Involvement in social activities	87	10	3
13	Obligation To Work Beyond Schedule If Required	80	10	10



Computer Application Department

S.No.	How satisfied are you with the student/s work performance in	Excelent	Good	Satisfied
1	New Teaching Strategies	80	12	8
2	Expert communication skills	80	5	15
3	Practical Approach	85	12	3
4	Leadership Qualities	79	10	12
5	Approach Towards Teamwork	88	8	4
6	Ideas & Innovation	82	10	8
7	Syllabus Relevance To Job Profile	85	10	5
8	Planning & Organization Skills	80	12	8
9	Relationship With Seniors / Peers / Subordinates	94	6	0
10	Strong work ethics	74	10	16
11	Ability to Contribute To The Goal Of The Organization	90	4	6
12	Involvement in social activities	85	12	3
13	Obligation To Work Beyond Schedule If Required	82	12	6



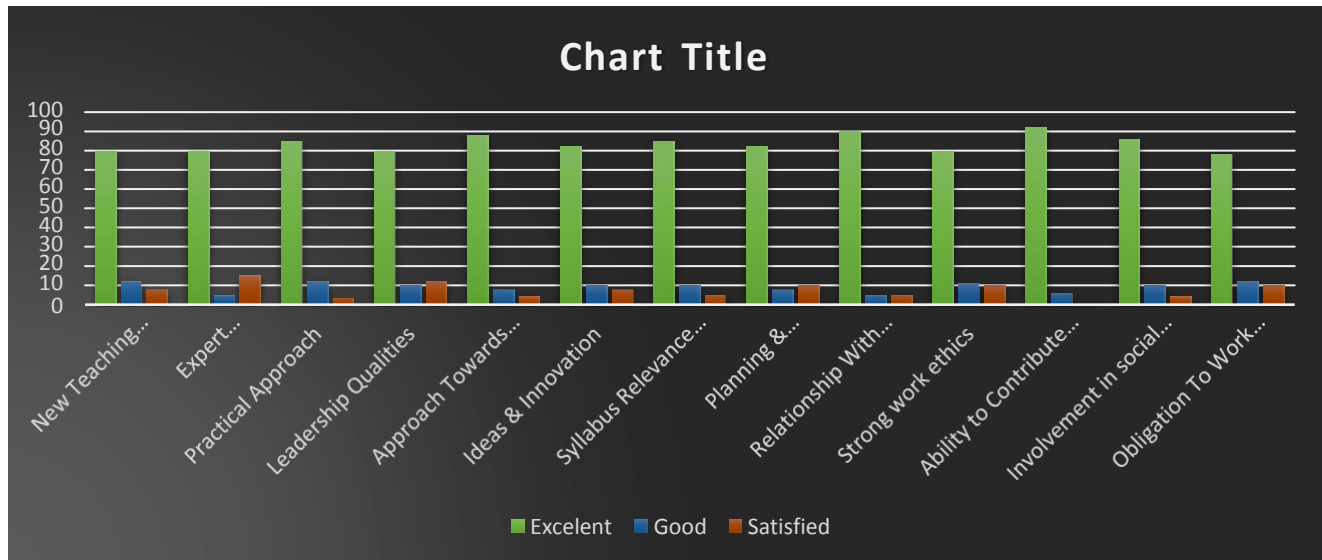
Computer Science Department

S.No.	How satisfied are you with the student/s work performance in	Excelent	Good	Satisfied
1	New Teaching Strategies	86	10	4
2	Expert communication skills	83	10	7
3	Practical Approach	87	12	3
4	Leadership Qualities	81	8	11
5	Approach Towards Teamwork	89	6	5
6	Ideas & Innovation	83	10	7
7	Syllabus Relevance To Job Profile	86	10	4
8	Planning & Organization Skills	83	8	9
9	Relationship With Seniors / Peers / Subordinates	92	5	3
10	Strong work ethics	80	10	10
11	Ability to Contribute To The Goal Of The Organization	93	5	2
12	Involvement in social activities	87	10	3
13	Obligation To Work Beyond Schedule If Required	80	10	10



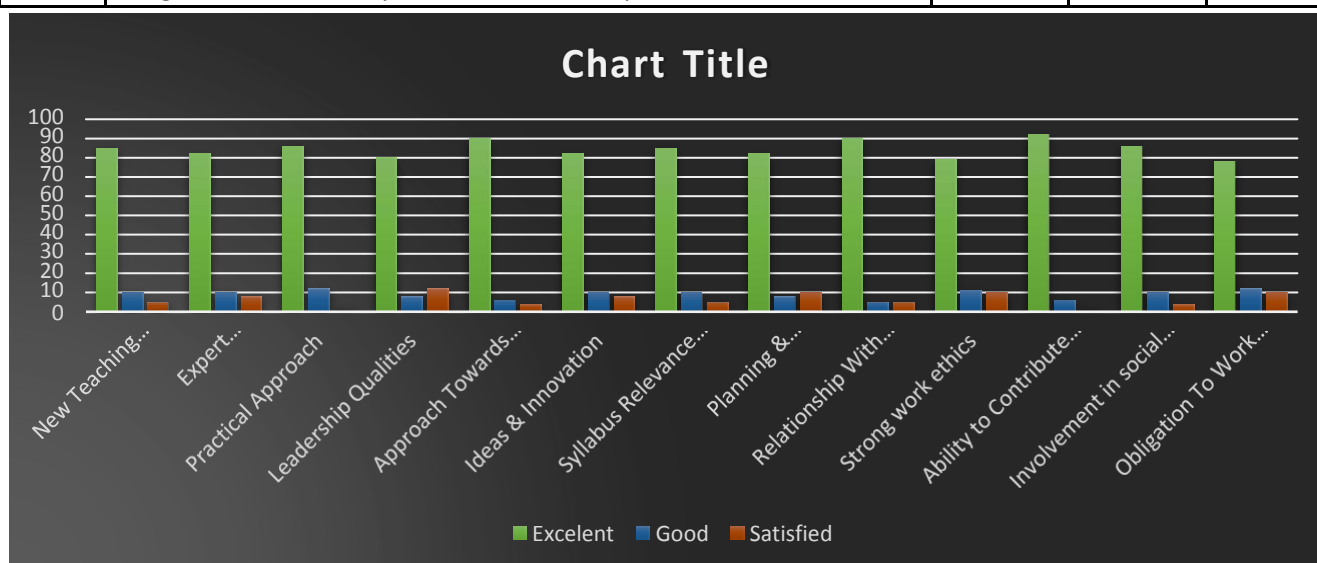
Interior Design Department

S.No.	How satisfied are you with the student/s work performance in	Excelent	Good	Satisfied
1	New Teaching Strategies	80	12	8
2	Expert communication skills	80	5	15
3	Practical Approach	85	12	3
4	Leadership Qualities	79	10	12
5	Approach Towards Teamwork	88	8	4
6	Ideas & Innovation	82	10	8
7	Syllabus Relevance To Job Profile	85	10	5
8	Planning & Organization Skills	82	8	10
9	Relationship With Seniors / Peers / Subordinates	90	5	5
10	Strong work ethics	79	11	10
11	Ability to Contribute To The Goal Of The Organization	92	6	2
12	Involvement in social activities	86	10	4
13	Obligation To Work Beyond Schedule If Required	78	12	10



Education Department

S.No.	How satisfied are you with the student/s work performance in	Excelent	Good	Satisfied
1	New Teaching Strategies	85	10	5
2	Expert communication skills	82	10	8
3	Practical Approach	86	12	2
4	Leadership Qualities	80	8	12
5	Approach Towards Teamwork	90	6	4
6	Ideas & Innovation	82	10	8
7	Syllabus Relevance To Job Profile	85	10	5
8	Planning & Organization Skills	82	8	10
9	Relationship With Seniors / Peers / Subordinates	90	5	5
10	Strong work ethics	79	11	10
11	Ability to Contribute To The Goal Of The Organization	92	6	2
12	Involvement in social activities	86	10	4
13	Obligation To Work Beyond Schedule If Required	78	12	10





MAHARAJA AGRASEN INTERNATIONAL COLLEGE

NAAC Accredited B+

(Run By Shree Maharaja Agrasen Charitable Trust)
Affiliated to Pt. Ravishankar Shukla University, Raipur
Shree Ramnath Bhimsen Marg, Samta Colony, Raipur - 492001 (C.G.) INDIA
Contact us : 0771-4024459, 4066664, 9770971171
E-mail : connect@maicindia.com, Website : www.maicindia.com

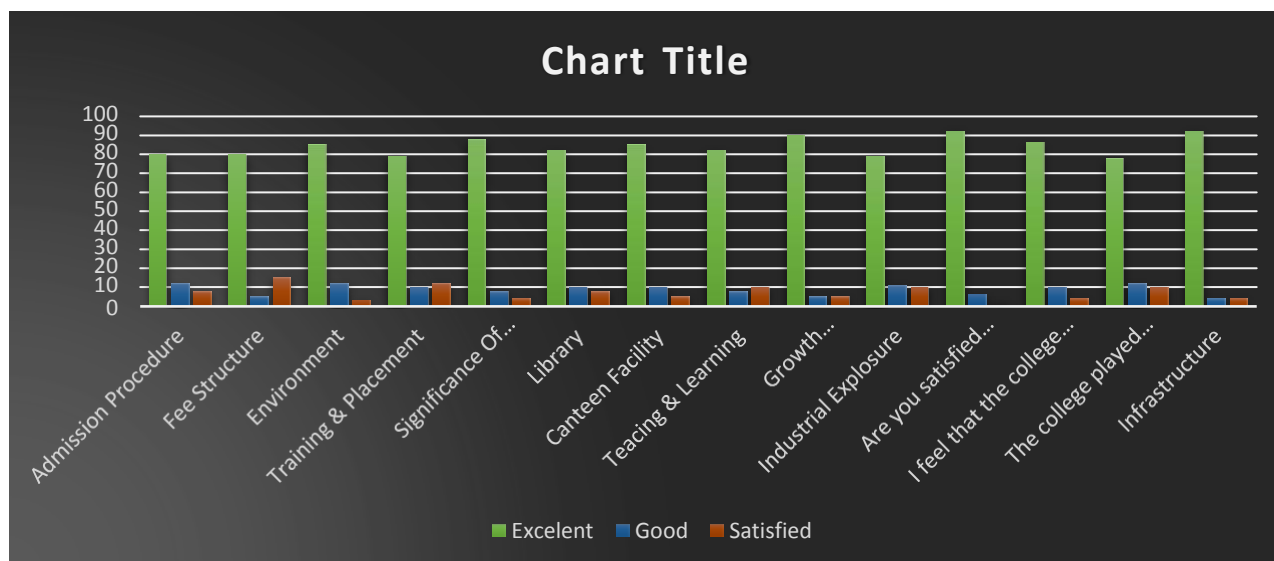


2020 - 2021

Alumni Feedback Form

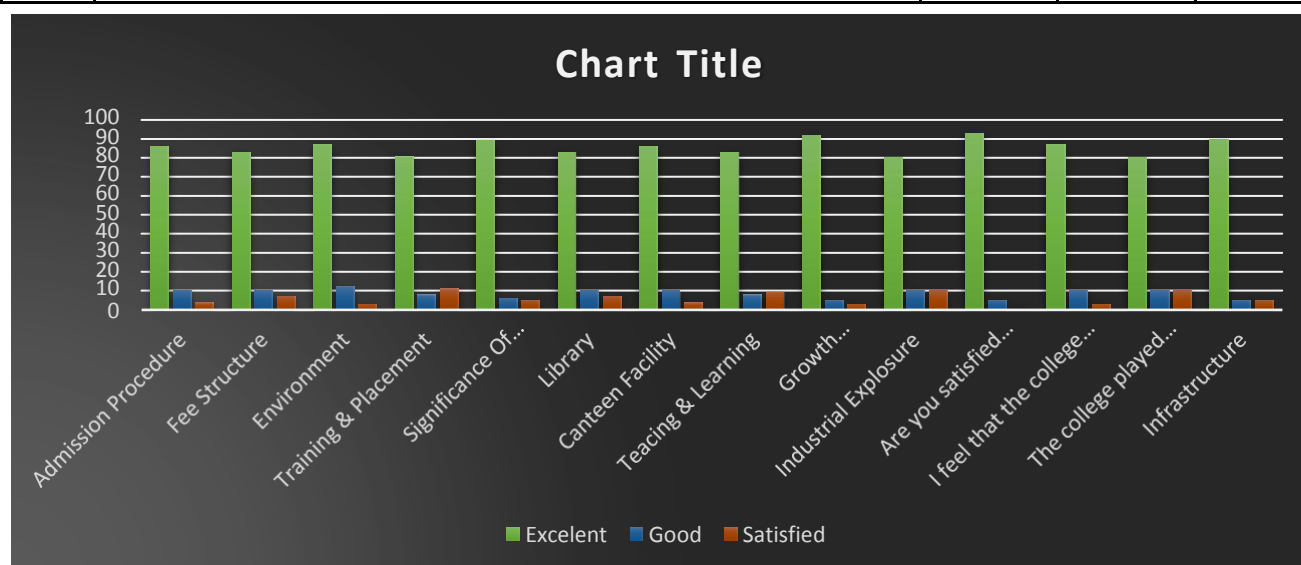
Commerce Department

S.No.	How satisfied are you with the student/s work performance in	Excelent	Good	Satisfied
1	Admission Procedure	80	12	8
2	Fee Structure	80	5	15
3	Environment	85	12	3
4	Training & Placement	79	10	12
5	Significance Of Course That You Had Learnt In Relation To Your	88	8	4
6	Library	82	10	8
7	Canteen Facility	85	10	5
8	Teacing & Learning	82	8	10
9	Growth Opportunities For Student	90	5	5
10	Industrial Explosure	79	11	10
11	Are you satisfied with the efforts taken by the College to connect	92	6	2
12	I feel that the college taught me some valuable lessons in character	86	10	4
13	The college played an important role in increasing my level of	78	12	10
14	Infrastructure	92	4	4



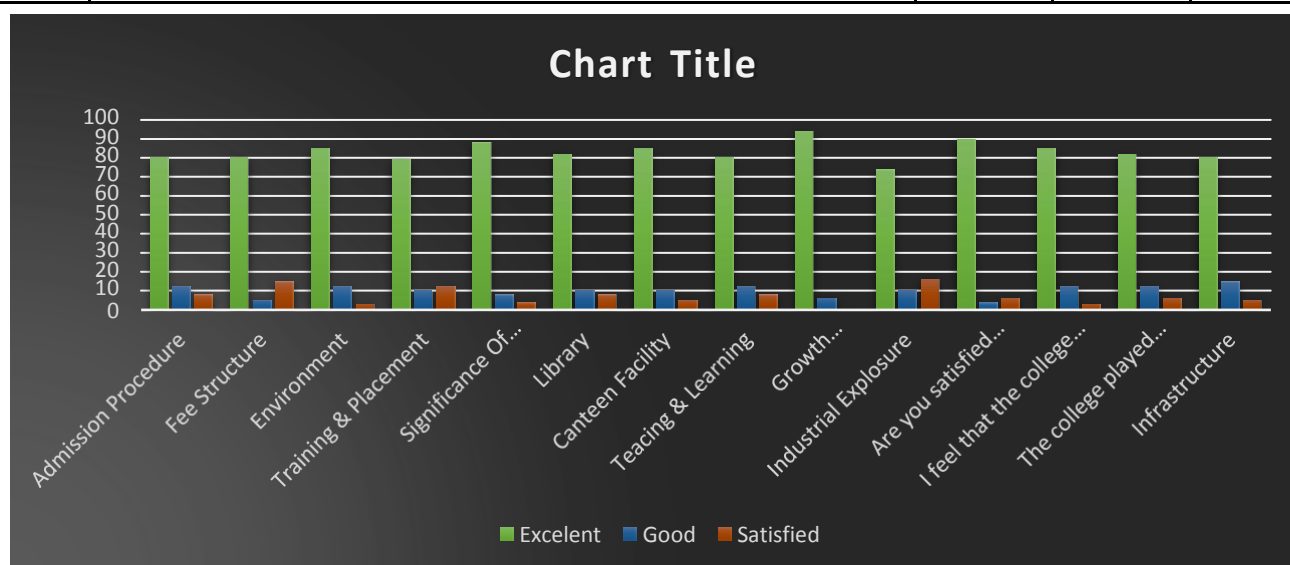
Management Department

S.No.	How satisfied are you with the student/s work performance in	Excelent	Good	Satisfied
1	Admission Procedure	86	10	4
2	Fee Structure	83	10	7
3	Environment	87	12	3
4	Training & Placement	81	8	11
5	Significance Of Course That You Had Learnt In Relation To Your	89	6	5
6	Library	83	10	7
7	Canteen Facility	86	10	4
8	Teacing & Learning	83	8	9
9	Growth Opportunities For Student	92	5	3
10	Industrial Explosure	80	10	10
11	Are you satisfied with the efforts taken by the College to connect	93	5	2
12	I feel that the college taught me some valuable lessons in character	87	10	3
13	The college played an important role in increasing my level of	80	10	10
14	Infrastructure	90	5	5



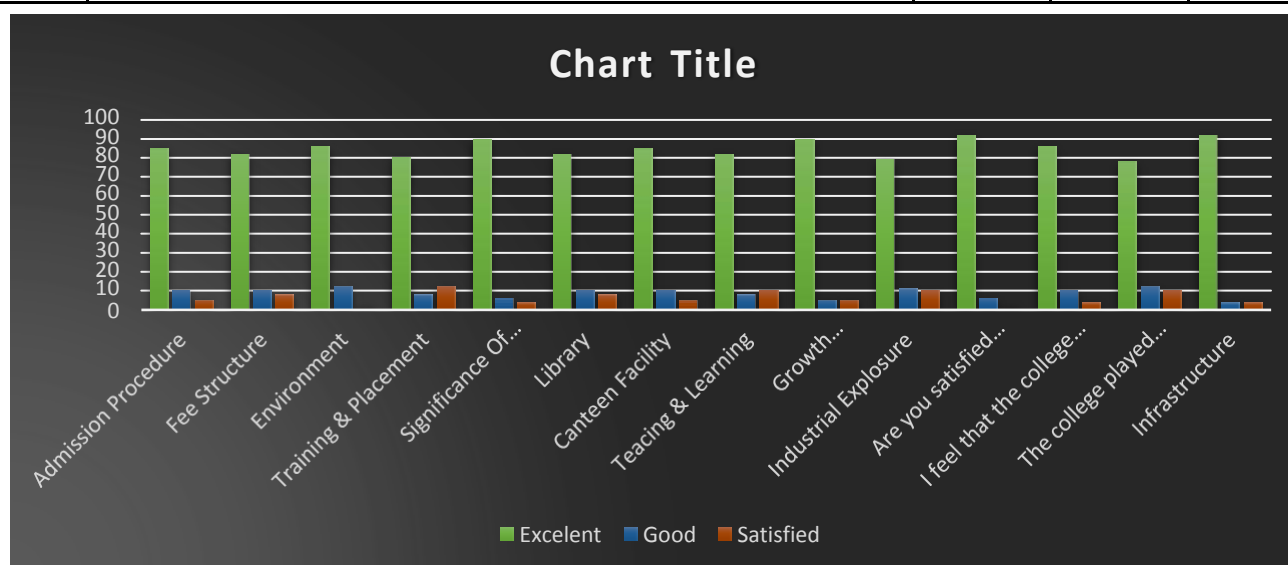
Computer Application Department

S.No.	How satisfied are you with the student/s work performance in	Excelent	Good	Satisfied
1	Admission Procedure	80	12	8
2	Fee Structure	80	5	15
3	Environment	85	12	3
4	Training & Placement	79	10	12
5	Significance Of Course That You Had Learnt In Relation To Your	88	8	4
6	Library	82	10	8
7	Canteen Facility	85	10	5
8	Teacing & Learning	80	12	8
9	Growth Opportunities For Student	94	6	0
10	Industrial Explosure	74	10	16
11	Are you satisfied with the efforts taken by the College to connect	90	4	6
12	I feel that the college taught me some valuable lessons in character	85	12	3
13	The college played an important role in increasing my level of	82	12	6
14	Infrastructure	80	15	5



Computer Science Department

S.No.	How satisfied are you with the student/s work performance in	Excelent	Good	Satisfied
1	Admission Procedure	85	10	5
2	Fee Structure	82	10	8
3	Environment	86	12	2
4	Training & Placement	80	8	12
5	Significance Of Course That You Had Learnt In Relation To Your	90	6	4
6	Library	82	10	8
7	Canteen Facility	85	10	5
8	Teacing & Learning	82	8	10
9	Growth Opportunities For Student	90	5	5
10	Industrial Explosure	79	11	10
11	Are you satisfied with the efforts taken by the College to connect	92	6	2
12	I feel that the college taught me some valuable lessons in character	86	10	4
13	The college played an important role in increasing my level of	78	12	10
14	Infrastructure	92	4	4



Interior Design Department

S.No.	How satisfied are you with the student/s work performance in	Excelent	Good	Satisfied
1	Admission Procedure	86	10	4
2	Fee Structure	83	10	7
3	Environment	87	12	3
4	Training & Placement	81	8	11
5	Significance Of Course That You Had Learnt In Relation To Your	89	6	5
6	Library	83	10	7
7	Canteen Facility	86	10	4
8	Teacing & Learning	83	8	9
9	Growth Opportunities For Student	92	5	3
10	Industrial Explosure	80	10	10
11	Are you satisfied with the efforts taken by the College to connect	93	5	2
12	I feel that the college taught me some valuable lessons in character	87	10	3
13	The college played an important role in increasing my level of	80	10	10
14	Infrastructure	90	5	5



Education Department

S.No.	How satisfied are you with the student/s work performance in	Excelent	Good	Satisfied
1	Admission Procedure	83	11	6
2	Fee Structure	80	12	8
3	Environment	89	10	1
4	Training & Placement	80	10	10
5	Significance Of Course That You Had Learnt In Relation To Your	87	5	8
6	Library	86	10	4
7	Canteen Facility	82	10	8
8	Teacing & Learning	83	7	10
9	Growth Opportunities For Student	90	5	5
10	Industrial Explosure	93	4	3
11	Are you satisfied with the efforts taken by the College to connect	80	10	10
12	I feel that the college taught me some valuable lessons in character	80	12	8
13	The college played an important role in increasing my level of	87	10	3
14	Infrastructure	89	7	4

