



# MAHARAJA AGRASEN INTERNATIONAL COLLEGE

NAAC Accredited B+  
(Run By Shree Maharaja Agrasen Charitable Trust)  
Affiliated to Pt. Ravishankar Shukla University, Raipur  
Shree Ramnath Bhimsen Marg, Samta Colony, Raipur - 492001 (C.G.) INDIA  
Contact us : 0771-4024459, 4066664, 9770971171  
E-mail : maic\_raipur@yahoo.co.in , Website : www.maicindia.com



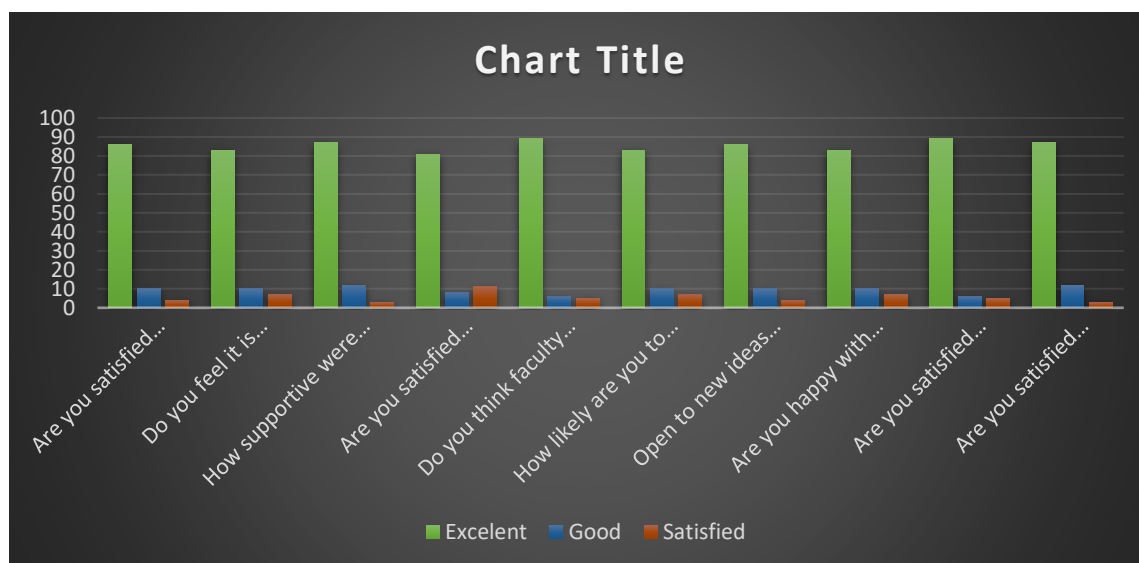
## 2021 - 2022

### Student Feedback Form

### Commerce Department

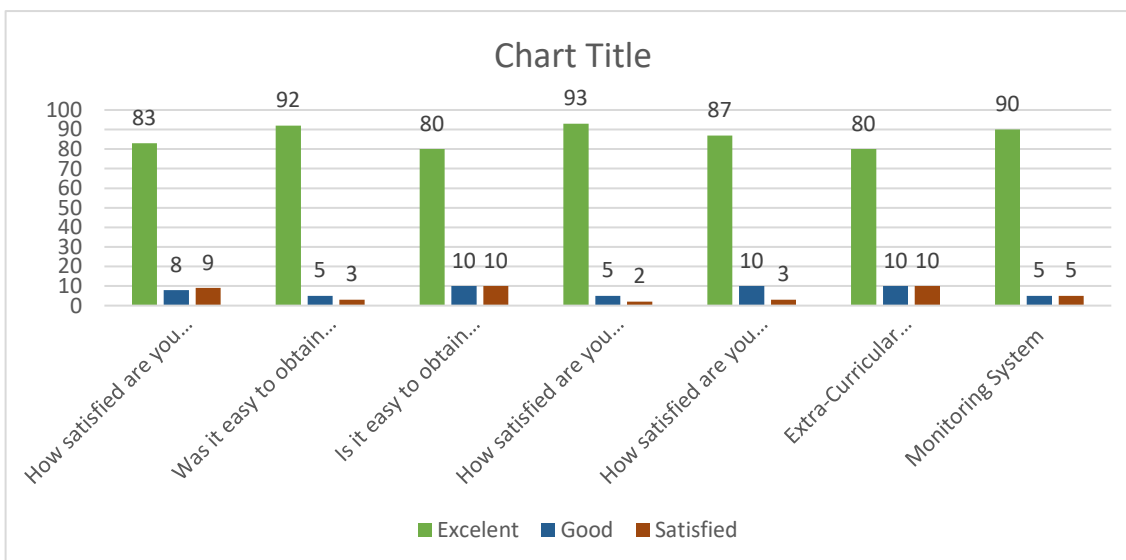
### Learning & Teaching

S.No.	How satisfied are you with the student/s work performance in	Excelent	Good	Satisfied
1	Are you satisfied with the teaching staff and their teaching methods?	86	10	4
2	Do you feel it is easier to register for different courses within the col	83	10	7
3	How supportive were the faculty members?	87	12	3
4	Are you satisfied with the teaching staff and their teaching practices?	81	8	11
5	Do you think faculty and support staff at the college were helpful?	89	6	5
6	How likely are you to continue attending this college next year?	83	10	7
7	Open to new ideas and learning new techniques	86	10	4
8	Are you happy with the overall performance of the college	83	10	7
9	Are you satisfied with the teaching methods and practices	89	6	5
10	Are you satisfied with quality of teching	87	12	3



# Infrastructure

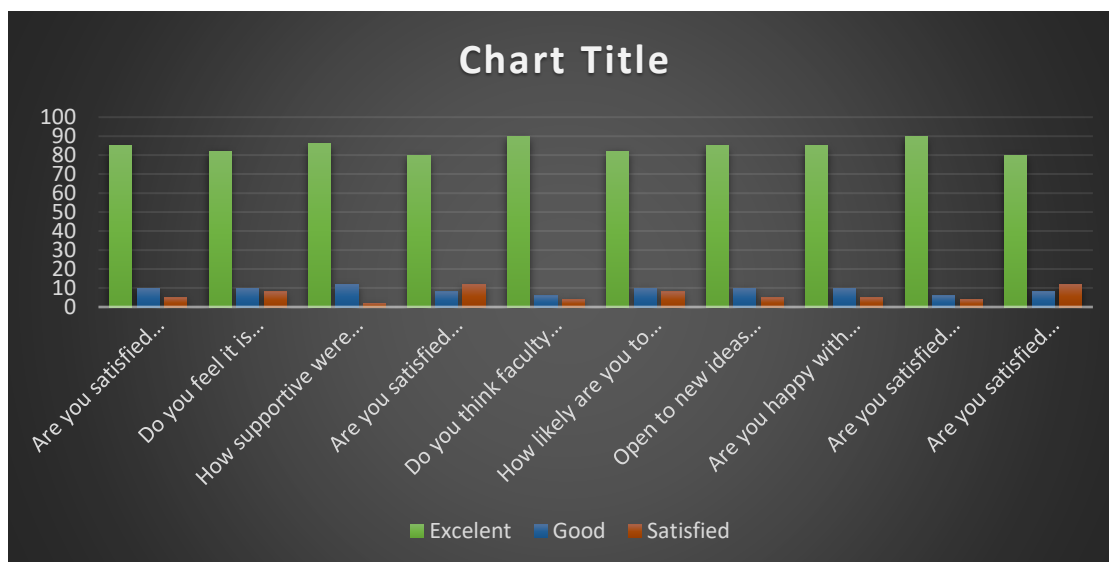
S.No.	How satisfied are you with the student/s work performance in	Excelent	Good	Satisfied
1	How satisfied are you with the facilities provided by the college?	83	8	9
2	Was it easy to obtain the necessary resources from the college librar	92	5	3
3	Is it easy to obtain the necessary resources from the college library?	80	10	10
4	How satisfied are you with the cleanliness and variety of food items	93	5	2
5	How satisfied are you with the accommodation?	87	10	3
6	Extra-Curricular Activity	80	10	10
7	Monitoring System	90	5	5



# Management Department

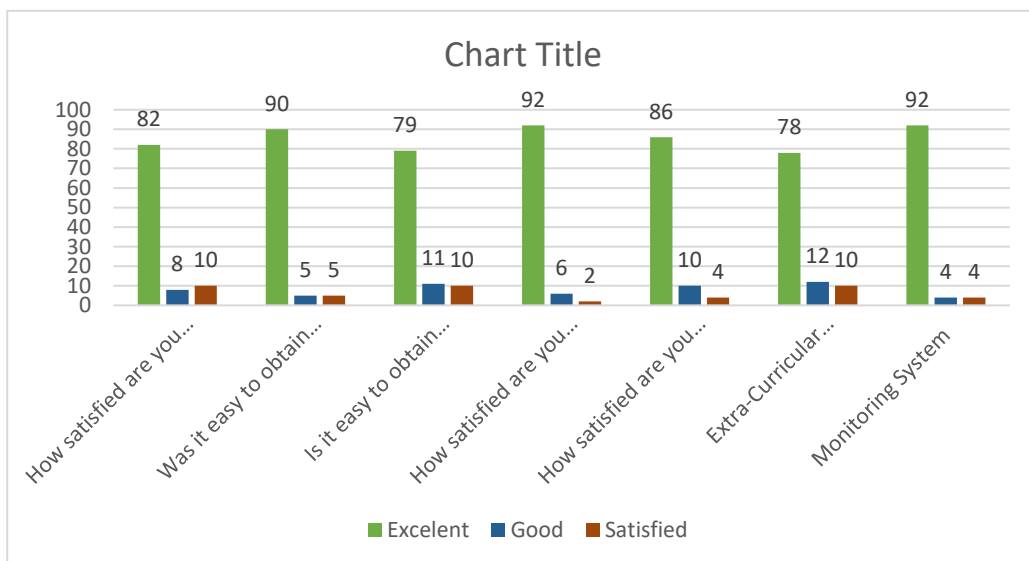
## Learning & Teaching

S.No.	How satisfied are you with the student/s work performance in	Excelent	Good	Satisfied
1	Are you satisfied with the teaching staff and their teaching methods?	85	10	5
2	Do you feel it is easier to register for different courses within the col	82	10	8
3	How supportive were the faculty members?	86	12	2
4	Are you satisfied with the teaching staff and their teaching practices?	80	8	12
5	Do you think faculty and support staff at the college were helpful?	90	6	4
6	How likely are you to continue attending this college next year?	82	10	8
7	Open to new ideas and learning new techniques	85	10	5
8	Are you happy with the overall performance of the college	85	10	5
9	Are you satisfied with the teaching methods and practices	90	6	4
10	Are you satisfied with quality of teching	80	8	12



# Infrastructure

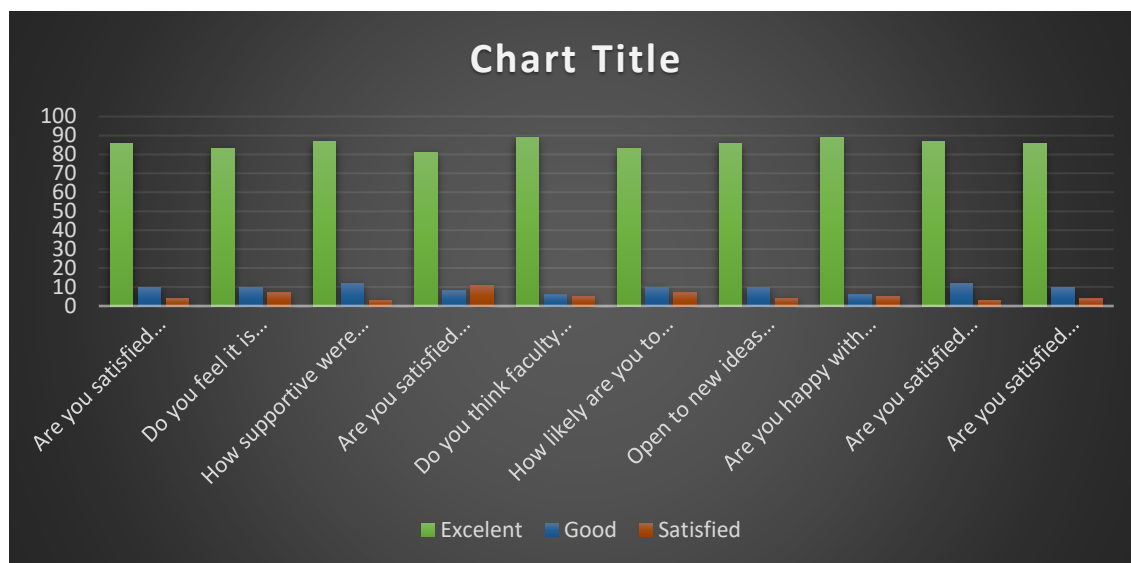
S.No.	How satisfied are you with the student/s work performance in	Excelent	Good	Satisfied
1	How satisfied are you with the facilities provided by the college?	82	8	10
2	Was it easy to obtain the necessary resources from the college librar	90	5	5
3	Is it easy to obtain the necessary resources from the college library?	79	11	10
4	How satisfied are you with the cleanliness and variety of food items	92	6	2
5	How satisfied are you with the accommodation?	86	10	4
6	Extra-Curricular Activity	78	12	10
7	Monitoring System	92	4	4



# Computer Application Department

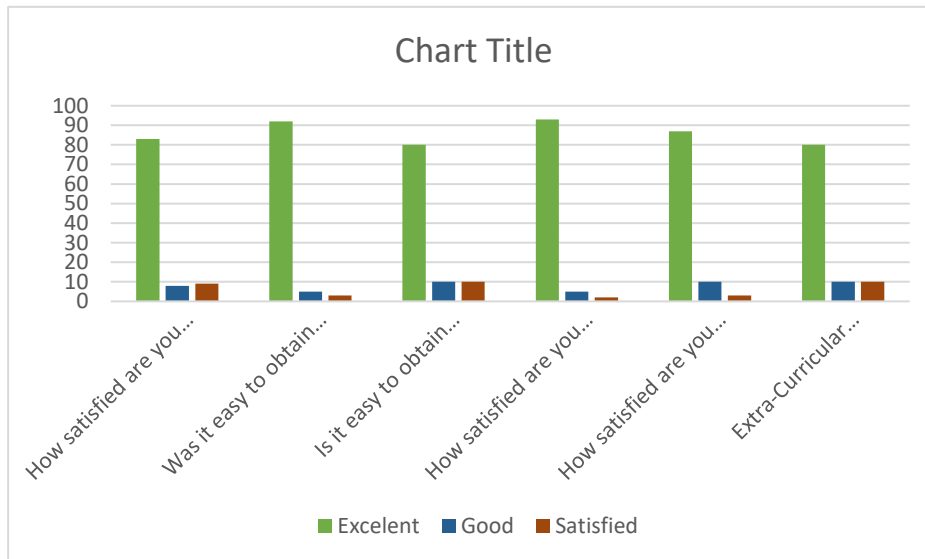
## Learning & Teaching

S.No.	How satisfied are you with the student/s work performance in	Excelent	Good	Satisfied
1	Are you satisfied with the teaching staff and their teaching methods?	86	10	4
2	Do you feel it is easier to register for different courses within the col	83	10	7
3	How supportive were the faculty members?	87	12	3
4	Are you satisfied with the teaching staff and their teaching practices?	81	8	11
5	Do you think faculty and support staff at the college were helpful?	89	6	5
6	How likely are you to continue attending this college next year?	83	10	7
7	Open to new ideas and learning new techniques	86	10	4
8	Are you happy with the overall performance of the college	89	6	5
9	Are you satisfied with the teaching methods and practices	87	12	3
10	Are you satisfied with quality of teching	86	10	4



# Infrastructure

S.No.	How satisfied are you with the student/s work performance in	Excelent	Good	Satisfied
1	How satisfied are you with the facilities provided by the college?	83	8	9
2	Was it easy to obtain the necessary resources from the college librar	92	5	3
3	Is it easy to obtain the necessary resources from the college library?	80	10	10
4	How satisfied are you with the cleanliness and variety of food items	93	5	2
5	How satisfied are you with the accommodation?	87	10	3
6	Extra-Curricular Activity	80	10	10
7	Monitoring System	90	5	5



# Computer Science Department

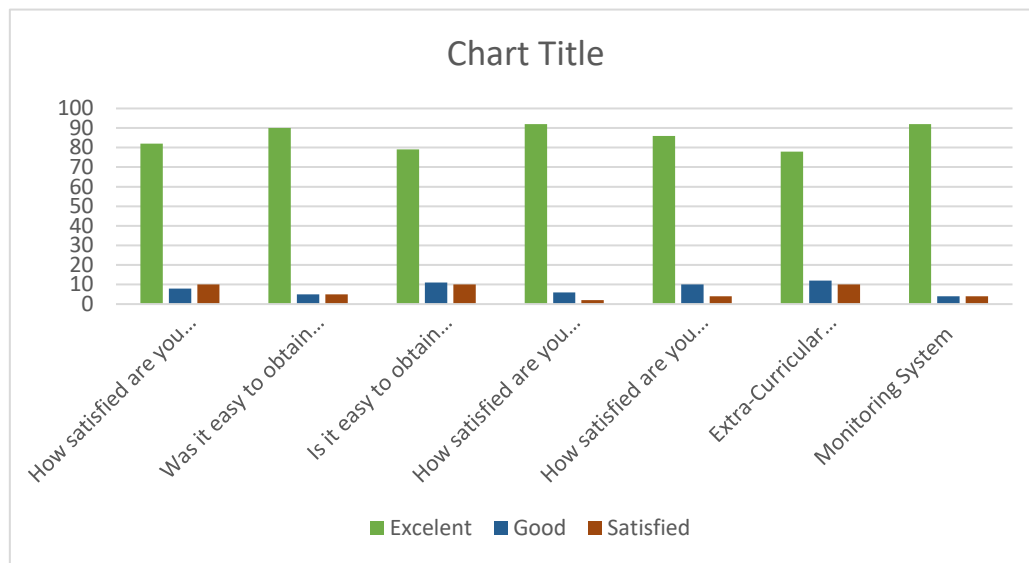
## Learning & Teaching

S.No.	How satisfied are you with the student/s work performance in	Excelent	Good	Satisfied
1	Are you satisfied with the teaching staff and their teaching methods?	80	12	8
2	Do you feel it is easier to register for different courses within the col	80	5	15
3	How supportive were the faculty members?	85	12	3
4	Are you satisfied with the teaching staff and their teaching practices?	79	10	12
5	Do you think faculty and support staff at the college were helpful?	88	8	4
6	How likely are you to continue attending this college next year?	82	10	8
7	Open to new ideas and learning new techniques	85	10	5
8	Are you happy with the overall performance of the college	85	10	5
9	Are you satisfied with the teaching methods and practices	88	8	4
10	Are you satisfied with quality of teching	80	5	15



# Infrastructure

S.No.	How satisfied are you with the student/s work performance in	Excelent	Good	Satisfied
1	How satisfied are you with the facilities provided by the college?	82	8	10
2	Was it easy to obtain the necessary resources from the college librar	90	5	5
3	Is it easy to obtain the necessary resources from the college library?	79	11	10
4	How satisfied are you with the cleanliness and variety of food items	92	6	2
5	How satisfied are you with the accommodation?	86	10	4
6	Extra-Curricular Activity	78	12	10
7	Monitoring System	92	4	4

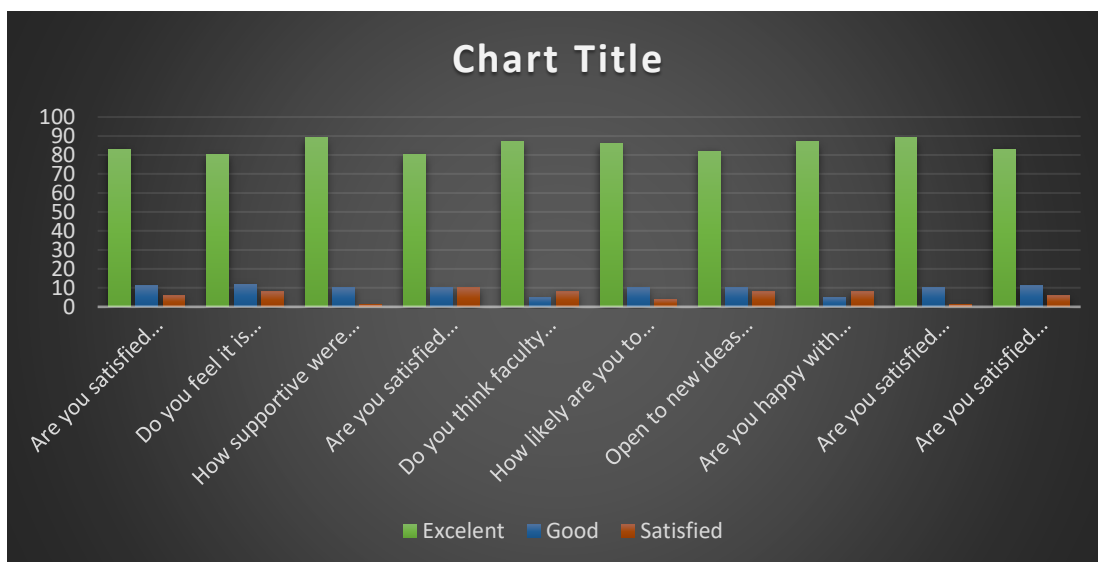




# Interior Design Department

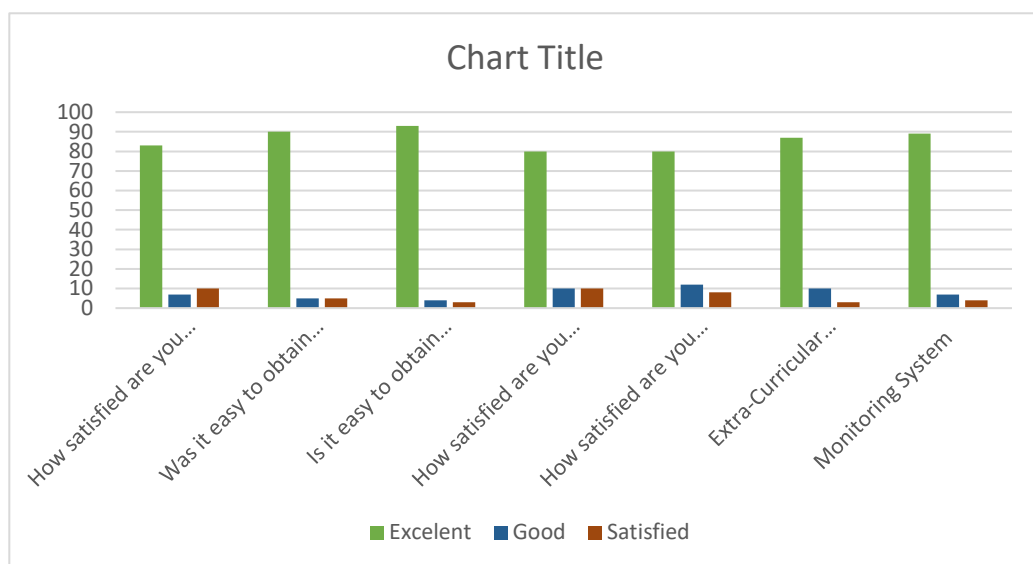
## Learning & Teaching

S.No.	How satisfied are you with the student/s work performance in	Excelent	Good	Satisfied
1	Are you satisfied with the teaching staff and their teaching methods?	83	11	6
2	Do you feel it is easier to register for different courses within the col	80	12	8
3	How supportive were the faculty members?	89	10	1
4	Are you satisfied with the teaching staff and their teaching practices?	80	10	10
5	Do you think faculty and support staff at the college were helpful?	87	5	8
6	How likely are you to continue attending this college next year?	86	10	4
7	Open to new ideas and learning new techniques	82	10	8
8	Are you happy with the overall performance of the college	87	5	8
9	Are you satisfied with the teaching methods and practices	89	10	1
10	Are you satisfied with quality of teching	83	11	6



# Infrastructure

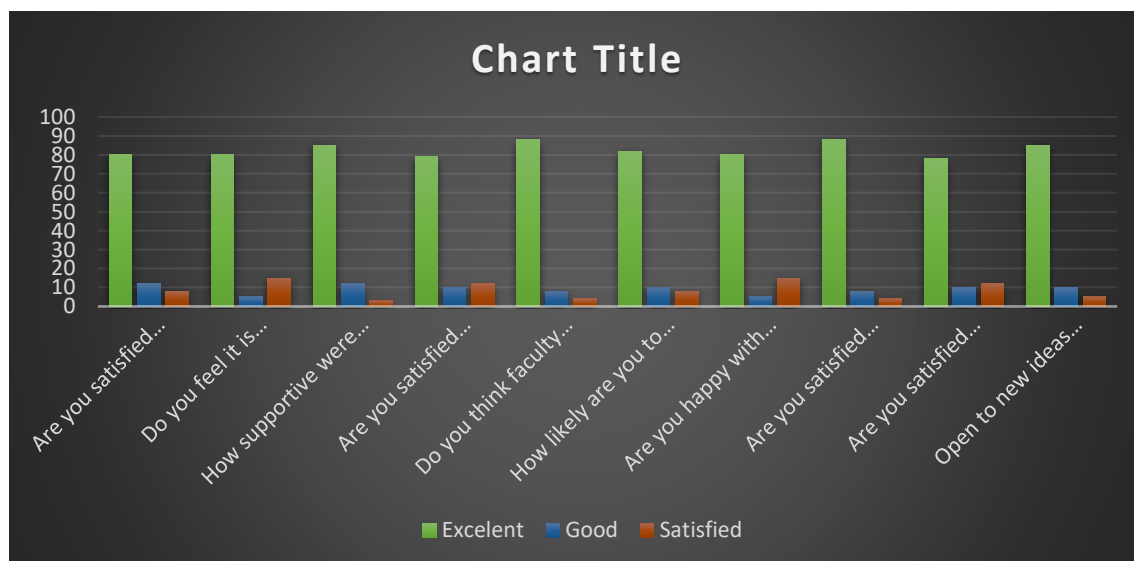
S.No.	How satisfied are you with the student/s work performance in	Excelent	Good	Satisfied
1	How satisfied are you with the facilities provided by the college?	83	7	10
2	Was it easy to obtain the necessary resources from the college librar	90	5	5
3	Is it easy to obtain the necessary resources from the college library?	93	4	3
4	How satisfied are you with the cleanliness and variety of food items	80	10	10
5	How satisfied are you with the accommodation?	80	12	8
6	Extra-Curricular Activity	87	10	3
7	Monitoring System	89	7	4



# Education Department

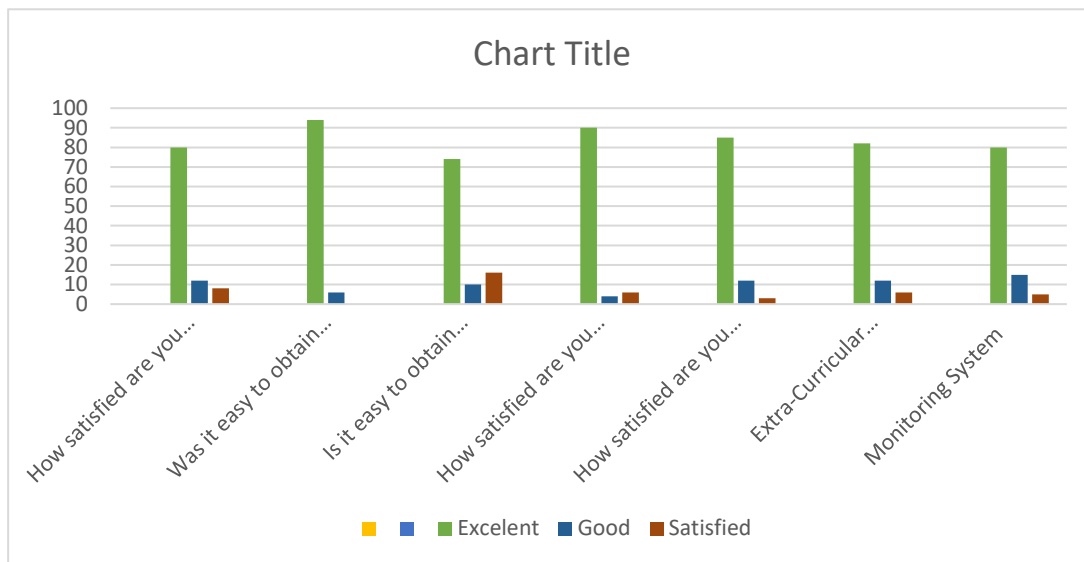
## Learning & Teaching

S.No.	How satisfied are you with the student/s work performance in	Excelent	Good	Satisfied
1	Are you satisfied with the teaching staff and their teaching methods?	80	12	8
2	Do you feel it is easier to register for different courses within the col	80	5	15
3	How supportive were the faculty members?	85	12	3
4	Are you satisfied with the teaching staff and their teaching practices?	79	10	12
5	Do you think faculty and support staff at the college were helpful?	88	8	4
6	How likely are you to continue attending this college next year?	82	10	8
7	Are you happy with the overall performance of the college	80	5	15
8	Are you satisfied with the teaching methods and practices	88	8	4
9	Are you satisfied with quality of teching	78	10	12
10	Open to new ideas and learning new techniques	85	10	5



# Infrastructure

S.No.	How satisfied are you with the student/s work performance in	Excelent	Good	Satisfied
1	How satisfied are you with the facilities provided by the college?	80	12	8
2	Was it easy to obtain the necessary resources from the college librar	94	6	0
3	Is it easy to obtain the necessary resources from the college library?	74	10	16
4	How satisfied are you with the cleanliness and variety of food items	90	4	6
5	How satisfied are you with the accommodation?	85	12	3
6	Extra-Curricular Activity	82	12	6
7	Monitoring System	80	15	5





# MAHARAJA AGRASEN INTERNATIONAL COLLEGE

NAAC Accredited B+  
 (Run By Shree Maharaja Agrasen Charitable Trust)  
 Affiliated to Pt. Ravishankar Shukla University, Raipur  
 Shree Ramnath Bhimsen Marg, Samta Colony, Raipur - 492001 (C.G.) INDIA  
 Contact us : 0771-4024459, 4066664, 9770971171  
 E-mail : maic\_raipur@yahoo.co.in , Website : www.maicindia.com

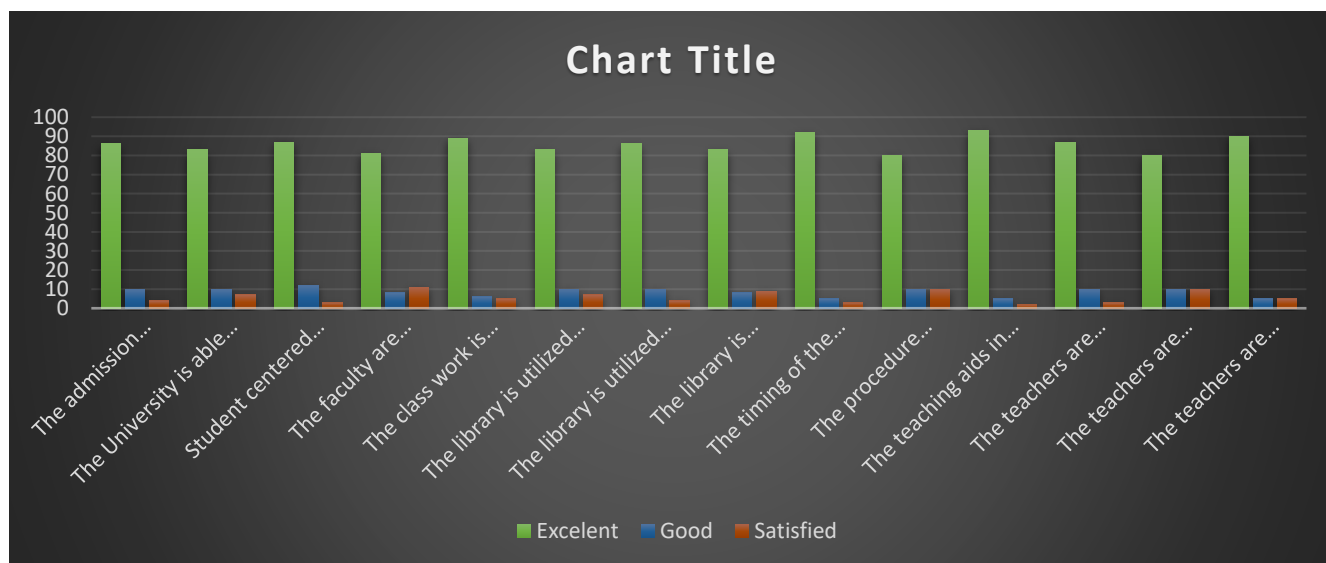


## 2021 - 2022

### Teacher Feedback Form

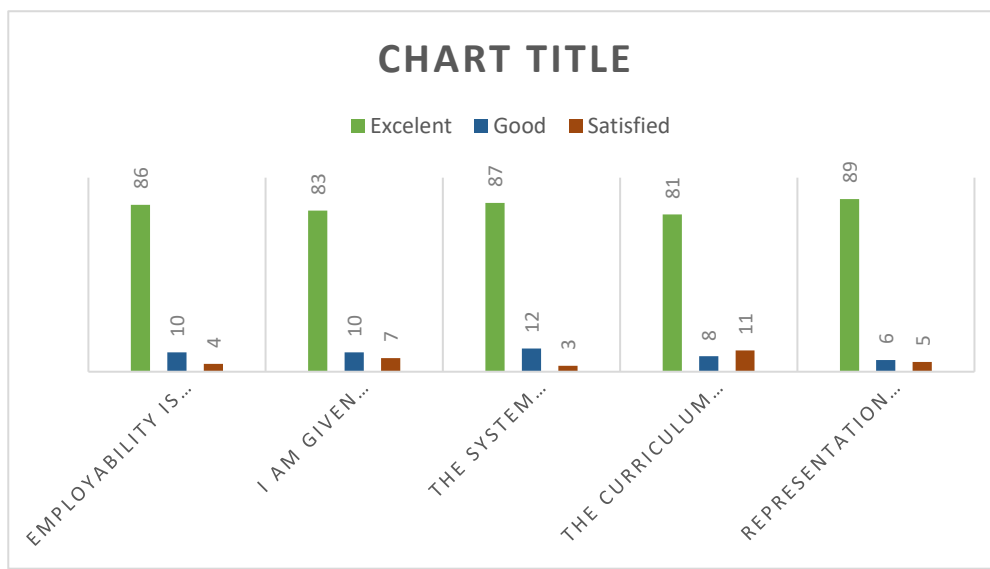
### Commerce Department

S.No.	How satisfied are you with the student/s work performance in	Excellent	Good	Satisfied
1	The admission process adopted by the University effective.	86	10	4
2	The University is able to attract meritorious students.	83	10	7
3	Student centered learning resources are available in the University	87	12	3
4	The faculty are updating their knowledge and skills	81	8	11
5	The class work is taking place as per schedule	89	6	5
6	The library is utilized optimally by the faculty.	83	10	7
7	The library is utilized optimally by the research scholars	86	10	4
8	The library is managed effectively	83	8	9
9	The timing of the Library are convenient	92	5	3
10	The procedure followed for acquiring new books and journals	80	10	10
11	The teaching aids in the department are sufficient and up to date.	93	5	2
12	The teachers are supported with adequate learning resources	87	10	3
13	The teachers are encouraged to carry out research.	80	10	10
14	The teachers are encouraged to organize	90	5	5



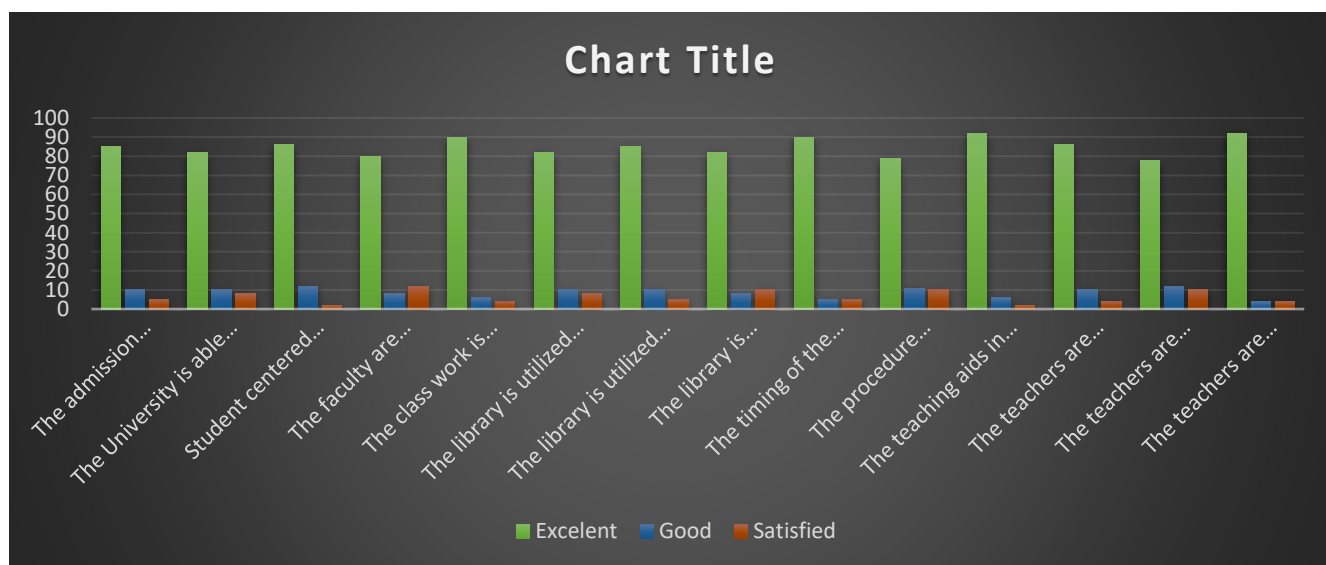
## II - Curriculum Design & Development

S.No.	How satisfied are you with the student/s work performance in	Excelent	Good	Satisfied
1	Employability is given weightage in curriculum design and	86	10	4
2	I am given enough freedom to contribute my ideas on curriculum	83	10	7
3	The system followed by the university for the design and	87	12	3
4	The curriculum has been updated from thime to time.	81	8	11
5	Representation from business and industry in PG Boards of studies	89	6	5



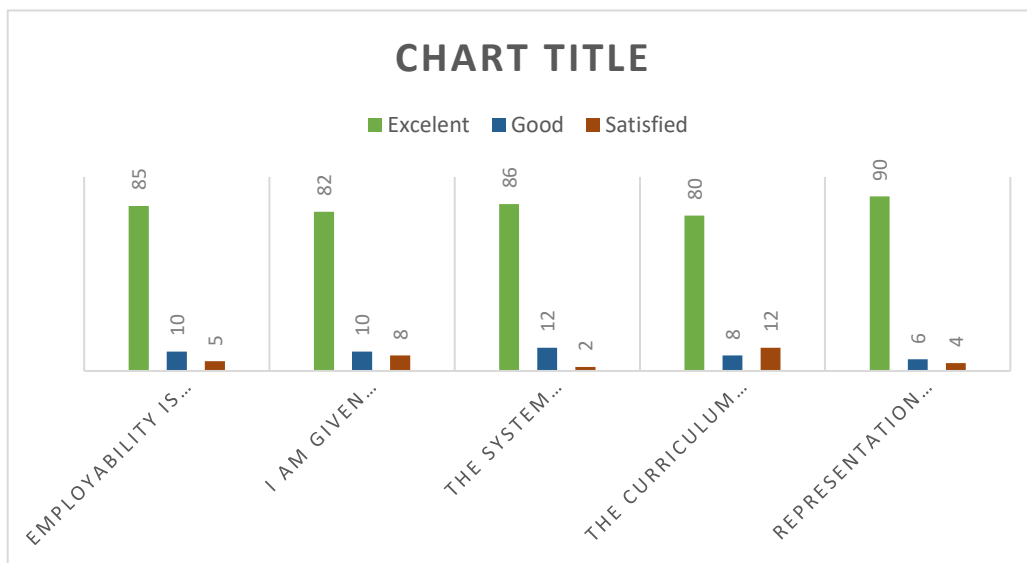
# Management Department

S.No.	How satisfied are you with the student/s work performance in	Excelent	Good	Satisfied
1	The admission process adopted by the University effective.	85	10	5
2	The University is able to attract meritorious students.	82	10	8
3	Student centered learning resourses are available in the University	86	12	2
4	The faculty are updating their knowledge and skills	80	8	12
5	The class work is taking place as per schedule	90	6	4
6	The library is utilized optimally by the faculty.	82	10	8
7	The library is utilized optimally by the research scholars	85	10	5
8	The library is managed effectively	82	8	10
9	The timing of the Library are convenient	90	5	5
10	The procedure followed for acquiring new books and journals	79	11	10
11	The teaching aids in the department are sufficient and up to date.	92	6	2
12	The teachers are supported with adequate learning resources	86	10	4
13	The teachers are encouraged to carry out research.	78	12	10
14	The teachers are encouraged to organize	92	4	4



## II - Curriculum Design & Development

S.No.	How satisfied are you with the student/s work performance in	Excelent	Good	Satisfied
1	Employability is given weightage in curriculum design and	85	10	5
2	I am given enough freedom to contribute my ideas on curriculum	82	10	8
3	The system followed by the university for the design and	86	12	2
4	The curriculum has been updated from thime to time.	80	8	12
5	Representation from business and industry in PG Boards of studies	90	6	4





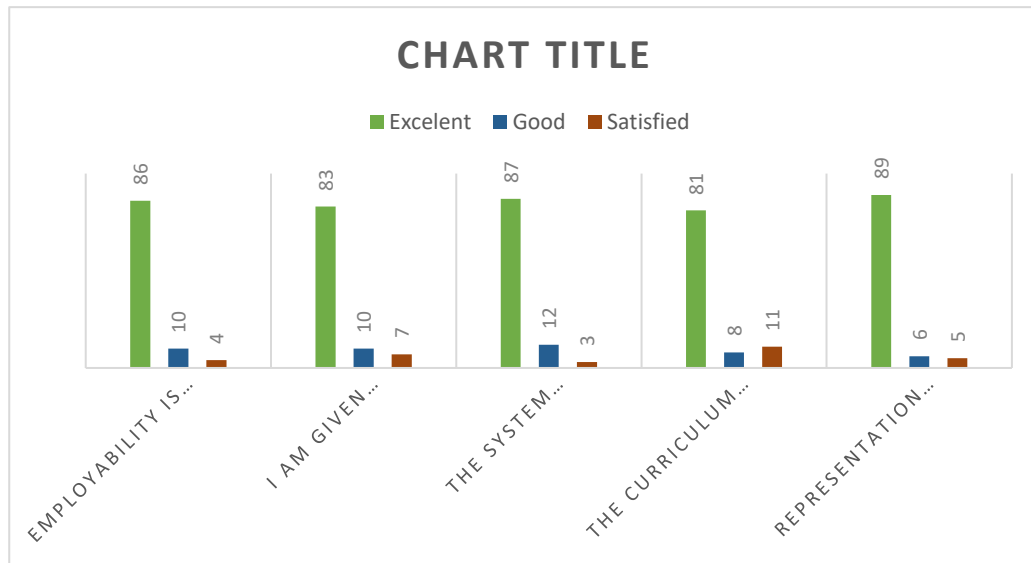
# Computer Application Department

S.No.	How satisfied are you with the student/s work performance in	Excellent	Good	Satisfied
1	The admission process adopted by the University effective.	86	10	4
2	The University is able to attract meritorious students.	83	10	7
3	Student centered learning resourses are available in the University	87	12	3
4	The faculty are updating their knowledge and skills	81	8	11
5	The class work is taking place as per schedule	89	6	5
6	The library is utilized optimally by the faculty.	83	10	7
7	The library is utilized optimally by the research scholars	86	10	4
8	The library is managed effectively	83	8	9
9	The timing of the Library are convenient	92	5	3
10	The procedure followed for acquiring new books and journals	80	10	10
11	The teaching aids in the department are sufficient and up to date.	93	5	2
12	The teachers are supported with adequate learning resources	87	10	3
13	The teachers are encouraged to carry out research.	80	10	10
14	The teachers are encouraged to organize	90	5	5



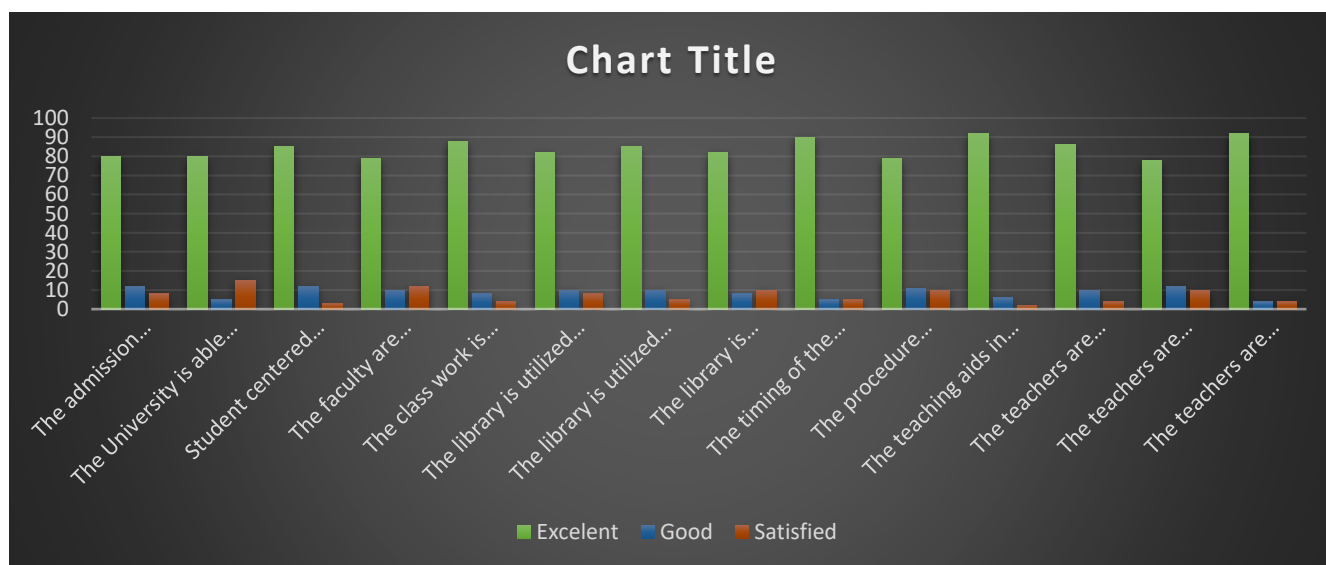
## II - Curriculum Design & Development

S.No.	How satisfied are you with the student/s work performance in	Excelent	Good	Satisfied
1	Employability is given weightage in curriculum design and	86	10	4
2	I am given enough freedom to contribute my ideas on curriculum	83	10	7
3	The system followed by the university for the design and	87	12	3
4	The curriculum has been updated from thime to time.	81	8	11
5	Representation from business and industry in PG Boards of studies	89	6	5



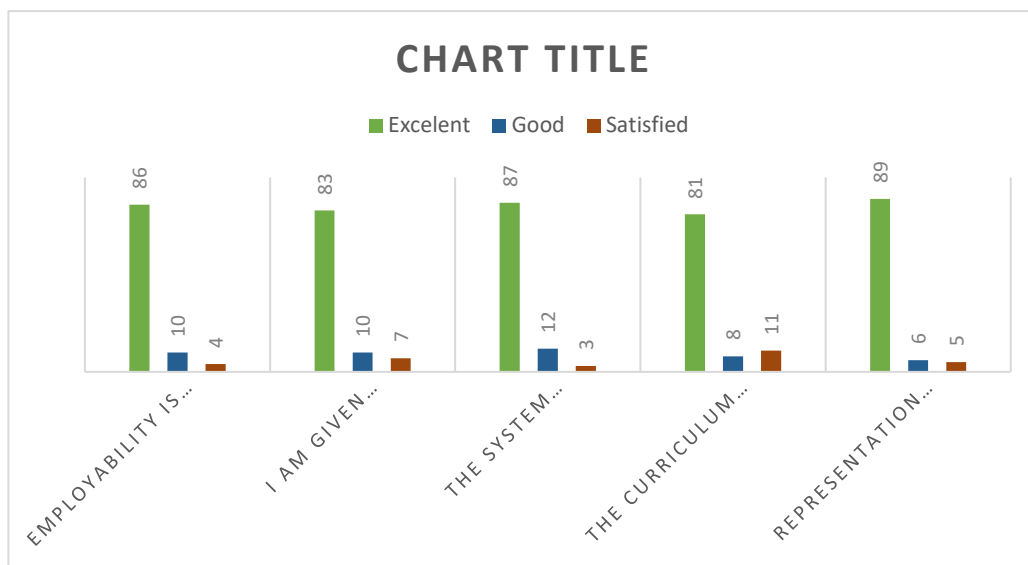
# Computer Science Department

S.No.	How satisfied are you with the student/s work performance in	Excellent	Good	Satisfied
1	The admission process adopted by the University effective.	80	12	8
2	The University is able to attract meritorious students.	80	5	15
3	Student centered learning resourses are available in the University	85	12	3
4	The faculty are updating their knowledge and skills	79	10	12
5	The class work is taking place as per schedule	88	8	4
6	The library is utilized optimally by the faculty.	82	10	8
7	The library is utilized optimally by the research scholars	85	10	5
8	The library is managed effectively	82	8	10
9	The timing of the Library are convenient	90	5	5
10	The procedure followed for acquiring new books and journals	79	11	10
11	The teaching aids in the department are sufficient and up to date.	92	6	2
12	The teachers are supported with adequate learning resources	86	10	4
13	The teachers are encouraged to carry out research.	78	12	10
14	The teachers are encouraged to organize	92	4	4



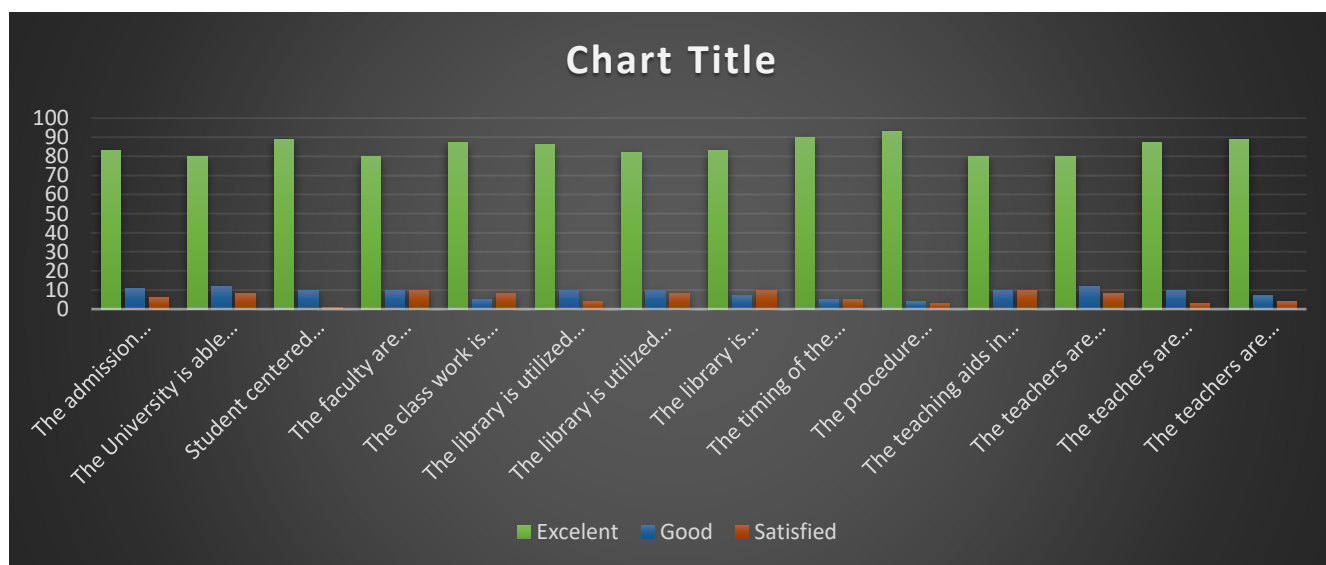
## II - Curriculum Design & Development

S.No.	How satisfied are you with the student/s work performance in	Excelent	Good	Satisfied
1	Employability is given weightage in curriculum design and	86	10	4
2	I am given enough freedom to contribute my ideas on curriculum	83	10	7
3	The system followed by the university for the design and	87	12	3
4	The curriculum has been updated from thime to time.	81	8	11
5	Representation from business and industry in PG Boards of studies	89	6	5



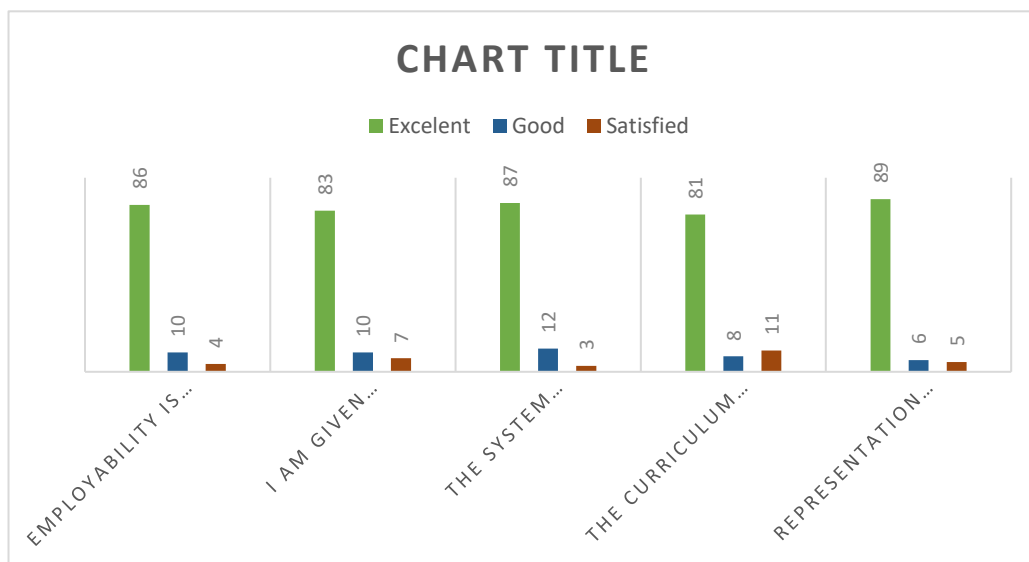
# Interior Design Department

S.No.	How satisfied are you with the student/s work performance in	Excelent	Good	Satisfied
1	The admission process adopted by the University effective.	83	11	6
2	The University is able to attract meritorious students.	80	12	8
3	Student centered learning resourses are available in the University	89	10	1
4	The faculty are updating their knowledge and skills	80	10	10
5	The class work is taking place as per schedule	87	5	8
6	The library is utilized optimally by the faculty.	86	10	4
7	The library is utilized optimally by the research scholars	82	10	8
8	The library is managed effectively	83	7	10
9	The timing of the Library are convenient	90	5	5
10	The procedure followed for acquiring new books and journals	93	4	3
11	The teaching aids in the department are sufficient and up to date.	80	10	10
12	The teachers are supported with adequate learning resources	80	12	8
13	The teachers are encouraged to carry out research.	87	10	3
14	The teachers are encouraged to organize	89	7	4



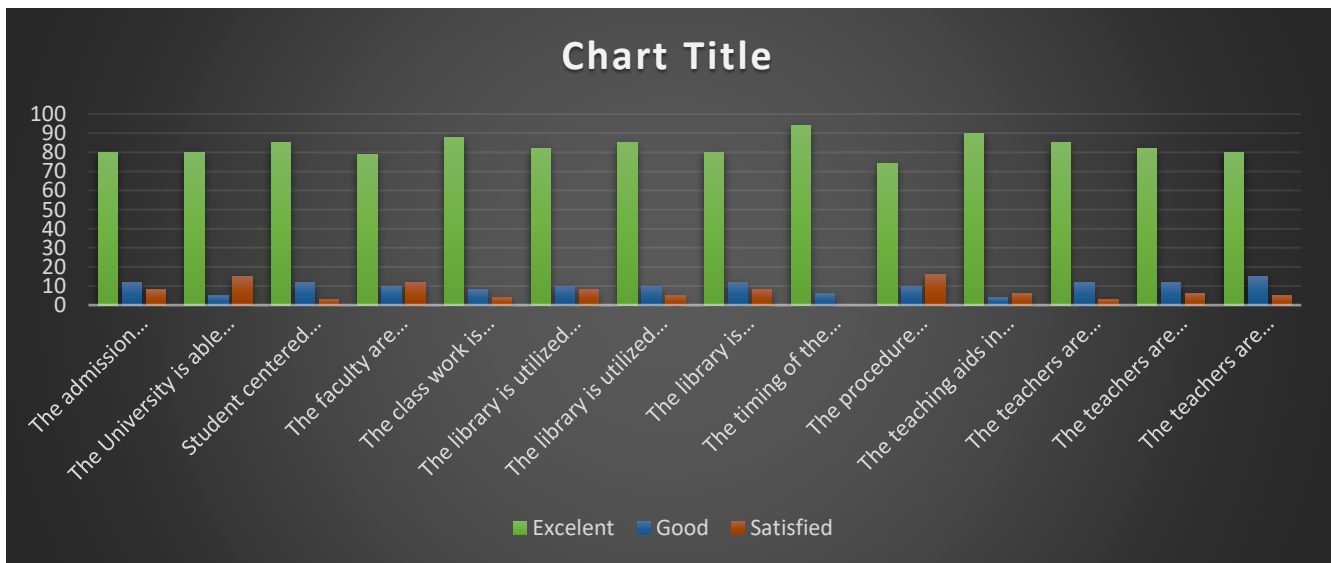
## II - Curriculum Design & Development

S.No.	How satisfied are you with the student/s work performance in	Excelent	Good	Satisfied
1	Employability is given weightage in curriculum design and	86	10	4
2	I am given enough freedom to contribute my ideas on curriculum	83	10	7
3	The system followed by the university for the design and	87	12	3
4	The curriculum has been updated from thime to time.	81	8	11
5	Representation from business and industry in PG Boards of studies	89	6	5



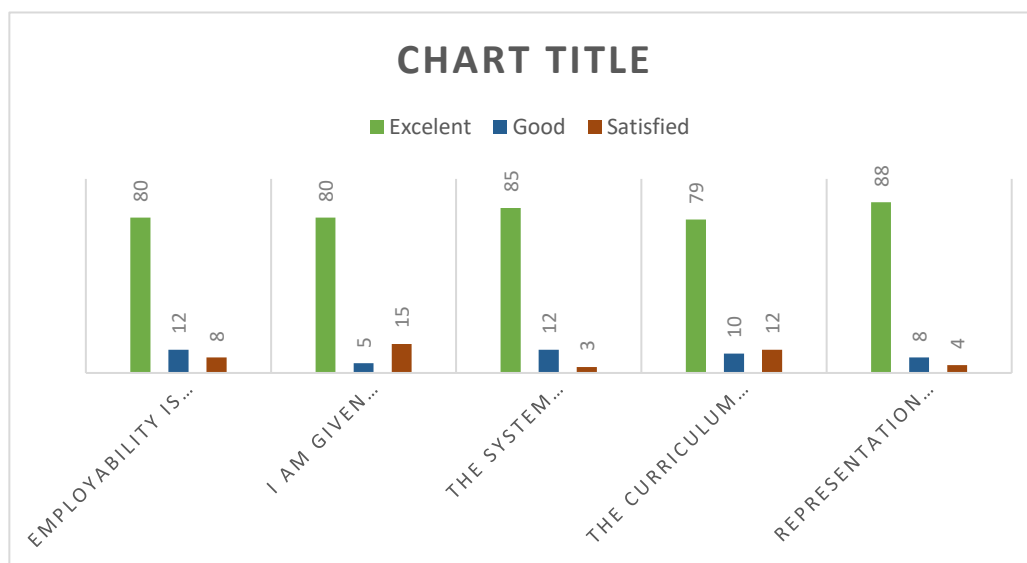
# Education Department

S.No.	How satisfied are you with the student/s work performance in	Excellent	Good	Satisfied
1	The admission process adopted by the University effective.	80	12	8
2	The University is able to attract meritorious students.	80	5	15
3	Student centered learning resourses are available in the University	85	12	3
4	The faculty are updating their knowledge and skills	79	10	12
5	The class work is taking place as per schedule	88	8	4
6	The library is utilized optimally by the faculty.	82	10	8
7	The library is utilized optimally by the research scholars	85	10	5
8	The library is managed effectively	80	12	8
9	The timing of the Library are convenient	94	6	0
10	The procedure followed for acquiring new books and journals	74	10	16
11	The teaching aids in the department are sufficient and up to date.	90	4	6
12	The teachers are supported with adequate learning resources	85	12	3
13	The teachers are encouraged to carry out research.	82	12	6
14	The teachers are encouraged to organize	80	15	5



## II - Curriculum Design & Development

S.No.	How satisfied are you with the student/s work performance in	Excelent	Good	Satisfied
1	Employability is given weightage in curriculum design and	80	12	8
2	I am given enough freedom to contribute my ideas on curriculum	80	5	15
3	The system followed by the university for the design and	85	12	3
4	The curriculum has been updated from thime to time.	79	10	12
5	Representation from business and industry in PG Boards of studies	88	8	4



























# MAHARAJA AGRASEN INTERNATIONAL COLLEGE

NAAC Accredited B+  
(Run By Shree Maharaja Agrasen Charitable Trust)  
Affiliated to Pt. Ravishankar Shukla University, Raipur  
Shree Ramnath Bhimsen Marg, Samta Colony, Raipur - 492001 (C.G.) INDIA  
Contact us : 0771-4024459, 4066664, 9770971171  
E-mail : maic\_raipur@yahoo.co.in , Website : www.maicindia.com



## 2021 - 2022

### Employer Feedback Form

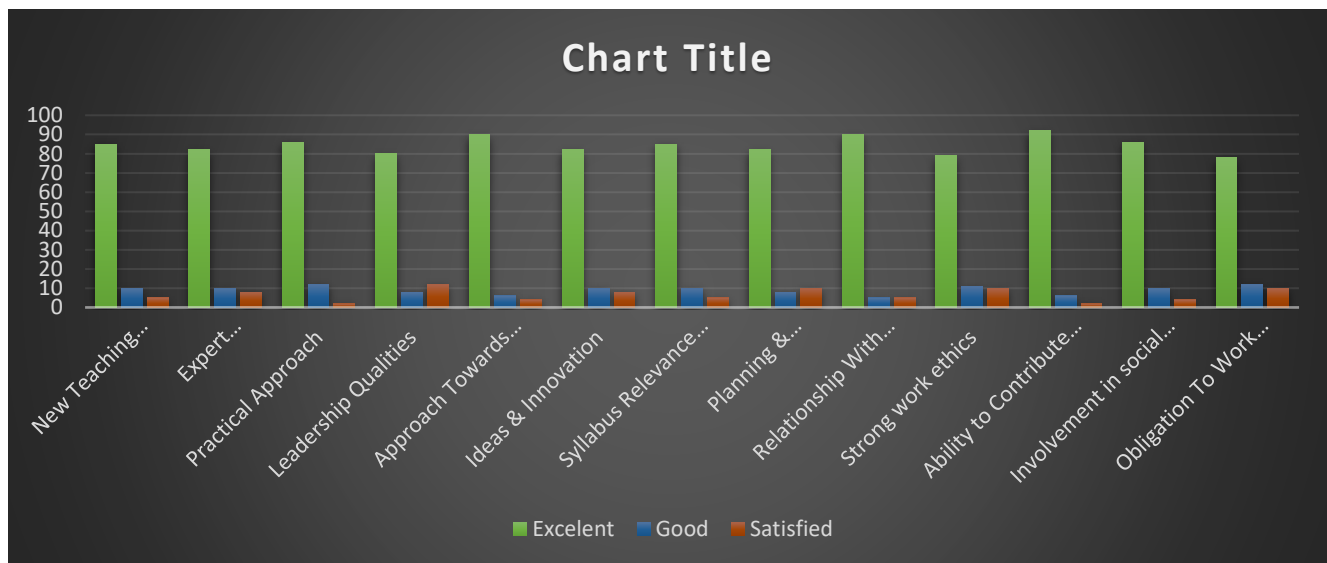
### Commerce Department

S.No.	How satisfied are you with the student/s work performance in	Excellent	Good	Satisfied
1	New Teaching Strategies	86	10	4
2	Expert communication skills	83	10	7
3	Practical Approach	87	12	3
4	Leadership Qualities	81	8	11
5	Approach Towards Teamwork	89	6	5
6	Ideas & Innovation	83	10	7
7	Syllabus Relevance To Job Profile	86	10	4
8	Planning & Organization Skills	83	8	9
9	Relationship With Seniors / Peers / Subordinates	92	5	3
10	Strong work ethics	80	10	10
11	Ability to Contribute To The Goal Of The Organization	93	5	2
12	Involvement in social activities	87	10	3
13	Obligation To Work Beyond Schedule If Required	80	10	10



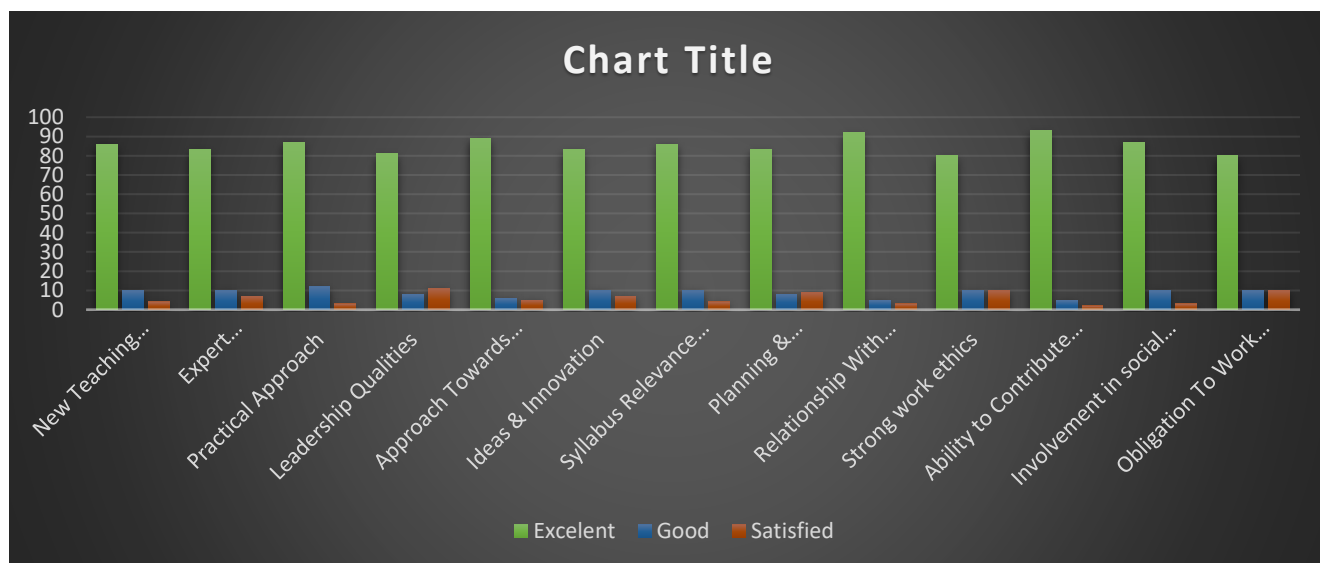
# Management Department

S.No.	How satisfied are you with the student/s work performance in	Excelent	Good	Satisfied
1	New Teaching Strategies	85	10	5
2	Expert communication skills	82	10	8
3	Practical Approach	86	12	2
4	Leadership Qualities	80	8	12
5	Approach Towards Teamwork	90	6	4
6	Ideas & Innovation	82	10	8
7	Syllabus Relevance To Job Profile	85	10	5
8	Planning & Organization Skills	82	8	10
9	Relationship With Seniors / Peers / Subordinates	90	5	5
10	Strong work ethics	79	11	10
11	Ability to Contribute To The Goal Of The Organization	92	6	2
12	Involvement in social activities	86	10	4
13	Obligation To Work Beyond Schedule If Required	78	12	10



# Computer Application Department

S.No.	How satisfied are you with the student/s work performance in	Excelent	Good	Satisfied
1	New Teaching Strategies	86	10	4
2	Expert communication skills	83	10	7
3	Practical Approach	87	12	3
4	Leadership Qualities	81	8	11
5	Approach Towards Teamwork	89	6	5
6	Ideas & Innovation	83	10	7
7	Syllabus Relevance To Job Profile	86	10	4
8	Planning & Organization Skills	83	8	9
9	Relationship With Seniors / Peers / Subordinates	92	5	3
10	Strong work ethics	80	10	10
11	Ability to Contribute To The Goal Of The Organization	93	5	2
12	Involvement in social activities	87	10	3
13	Obligation To Work Beyond Schedule If Required	80	10	10



# Computer Science Department

S.No.	How satisfied are you with the student/s work performance in	Excelent	Good	Satisfied
1	New Teaching Strategies	80	12	8
2	Expert communication skills	80	5	15
3	Practical Approach	85	12	3
4	Leadership Qualities	79	10	12
5	Approach Towards Teamwork	88	8	4
6	Ideas & Innovation	82	10	8
7	Syllabus Relevance To Job Profile	85	10	5
8	Planning & Organization Skills	82	8	10
9	Relationship With Seniors / Peers / Subordinates	90	5	5
10	Strong work ethics	79	11	10
11	Ability to Contribute To The Goal Of The Organization	92	6	2
12	Involvement in social activities	86	10	4
13	Obligation To Work Beyond Schedule If Required	78	12	10



# Interior Design Department

S.No.	How satisfied are you with the student/s work performance in	Excelent	Good	Satisfied
1	New Teaching Strategies	83	11	6
2	Expert communication skills	80	12	8
3	Practical Approach	89	10	1
4	Leadership Qualities	80	10	10
5	Approach Towards Teamwork	87	5	8
6	Ideas & Innovation	86	10	4
7	Syllabus Relevance To Job Profile	82	10	8
8	Planning & Organization Skills	83	7	10
9	Relationship With Seniors / Peers / Subordinates	90	5	5
10	Strong work ethics	93	4	3
11	Ability to Contribute To The Goal Of The Organization	80	10	10
12	Involvement in social activities	80	12	8
13	Obligation To Work Beyond Schedule If Required	87	10	3



# Education Department

S.No.	How satisfied are you with the student/s work performance in	Excelent	Good	Satisfied
1	New Teaching Strategies	80	12	8
2	Expert communication skills	80	5	15
3	Practical Approach	85	12	3
4	Leadership Qualities	79	10	12
5	Approach Towards Teamwork	88	8	4
6	Ideas & Innovation	82	10	8
7	Syllabus Relevance To Job Profile	85	10	5
8	Planning & Organization Skills	80	12	8
9	Relationship With Seniors / Peers / Subordinates	94	6	0
10	Strong work ethics	74	10	16
11	Ability to Contribute To The Goal Of The Organization	90	4	6
12	Involvement in social activities	85	12	3
13	Obligation To Work Beyond Schedule If Required	82	12	6



|











# MAHARAJA AGRASEN INTERNATIONAL COLLEGE

NAAC Accredited B+  
(Run By Shree Maharaja Agrasen Charitable Trust)  
Affiliated to Pt. Ravishankar Shukla University, Raipur  
Shree Ramnath Bhimsen Marg, Samta Colony, Raipur - 492001 (C.G.) INDIA  
Contact us : 0771-4024459, 4066664, 9770971171  
E-mail : maic\_raipur@yahoo.co.in , Website : www.maicindia.com

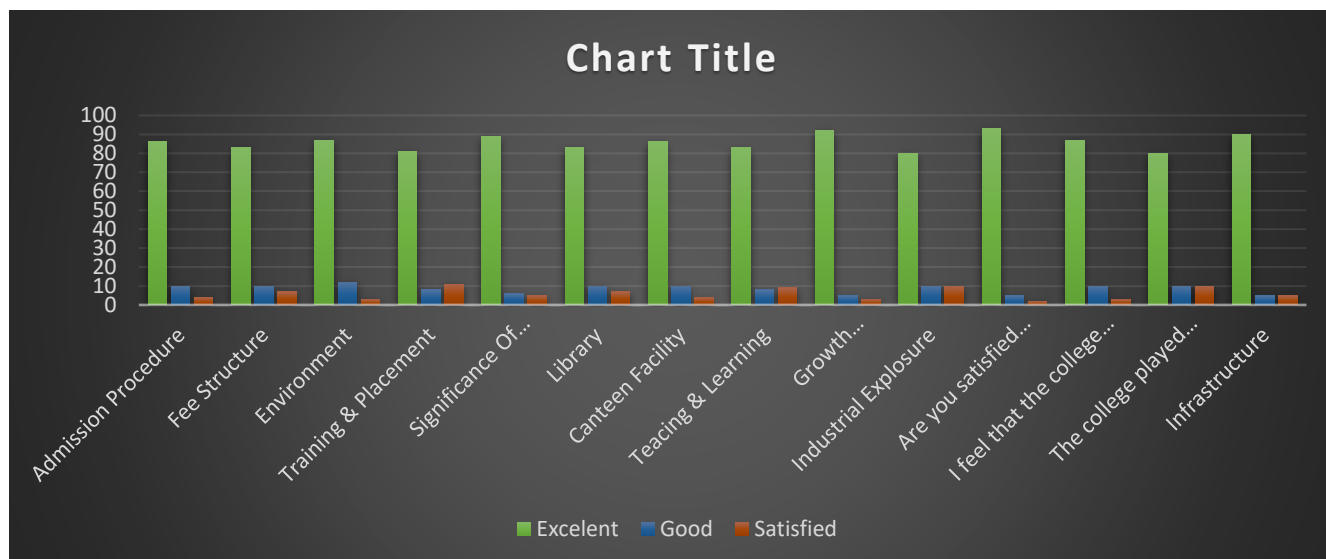


## 2021 - 2022

### Alumni Feedback Form

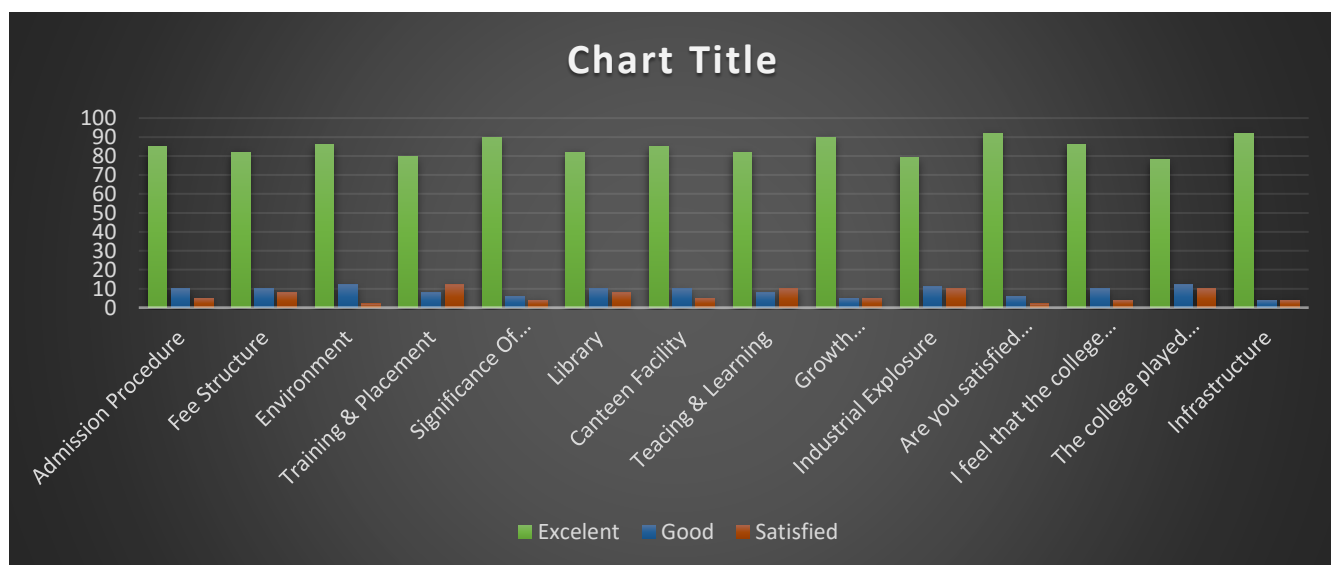
### Commerce Department

S.No.	How satisfied are you with the student/s work performance in	Excelent	Good	Satisfied
1	Admission Procedure	86	10	4
2	Fee Structure	83	10	7
3	Environment	87	12	3
4	Training & Placement	81	8	11
5	Significance Of Course That You Had Learnt In Relation To Your	89	6	5
6	Library	83	10	7
7	Canteen Facility	86	10	4
8	Teacing & Learning	83	8	9
9	Growth Opportunities For Student	92	5	3
10	Industrial Explosure	80	10	10
11	Are you satisfied with the efforts taken by the College to connect	93	5	2
12	I feel that the college taught me some valuable lessons in character	87	10	3
13	The college played an important role in increasing my level of	80	10	10
14	Infrastructure	90	5	5



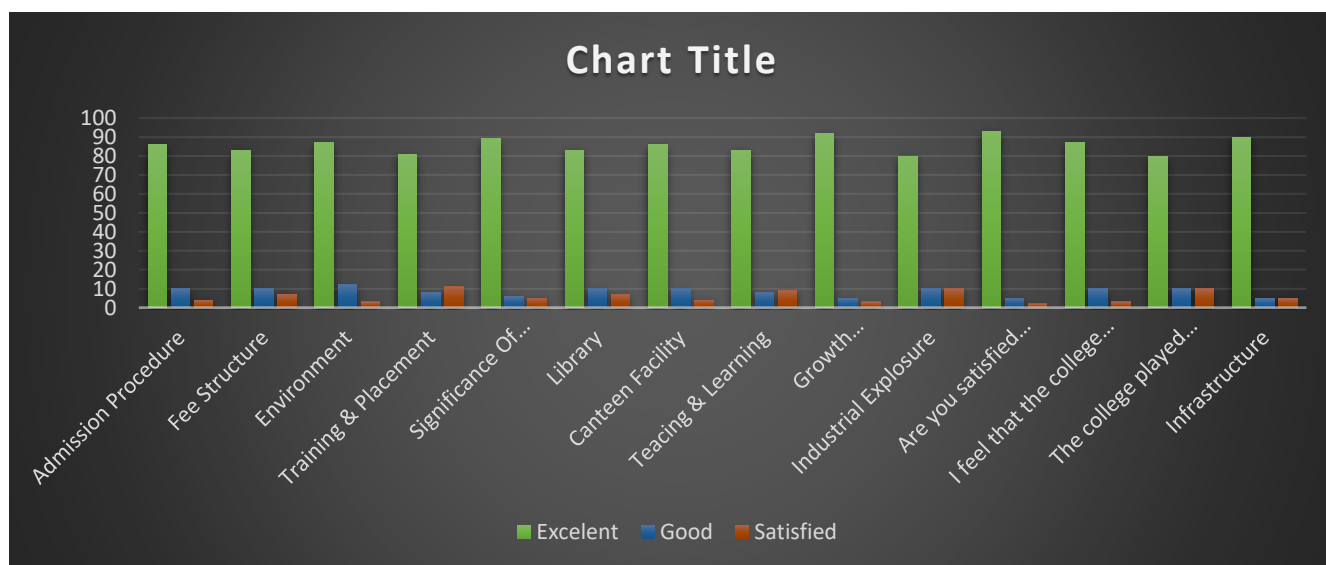
# Management Department

S.No.	How satisfied are you with the student/s work performance in	Excelent	Good	Satisfied
1	Admission Procedure	85	10	5
2	Fee Structure	82	10	8
3	Environment	86	12	2
4	Training & Placement	80	8	12
5	Significance Of Course That You Had Learnt In Relation To Your	90	6	4
6	Library	82	10	8
7	Canteen Facility	85	10	5
8	Teacing & Learning	82	8	10
9	Growth Opportunities For Student	90	5	5
10	Industrial Explosure	79	11	10
11	Are you satisfied with the efforts taken by the College to connect	92	6	2
12	I feel that the college taught me some valuable lessons in character	86	10	4
13	The college played an important role in increasing my level of	78	12	10
14	Infrastructure	92	4	4



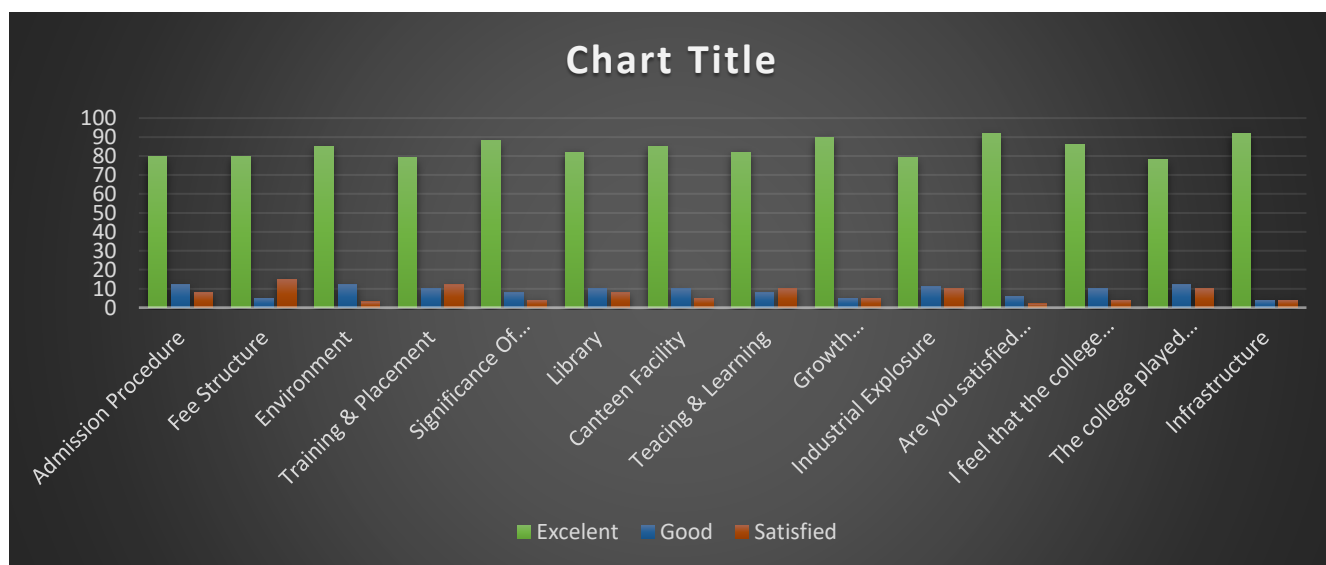
# Computer Application Department

S.No.	How satisfied are you with the student/s work performance in	Excelent	Good	Satisfied
1	Admission Procedure	86	10	4
2	Fee Structure	83	10	7
3	Environment	87	12	3
4	Training & Placement	81	8	11
5	Significance Of Course That You Had Learnt In Relation To Your	89	6	5
6	Library	83	10	7
7	Canteen Facility	86	10	4
8	Teacing & Learning	83	8	9
9	Growth Opportunities For Student	92	5	3
10	Industrial Explosure	80	10	10
11	Are you satisfied with the efforts taken by the College to connect	93	5	2
12	I feel that the college taught me some valuable lessons in character	87	10	3
13	The college played an important role in increasing my level of	80	10	10
14	Infrastructure	90	5	5



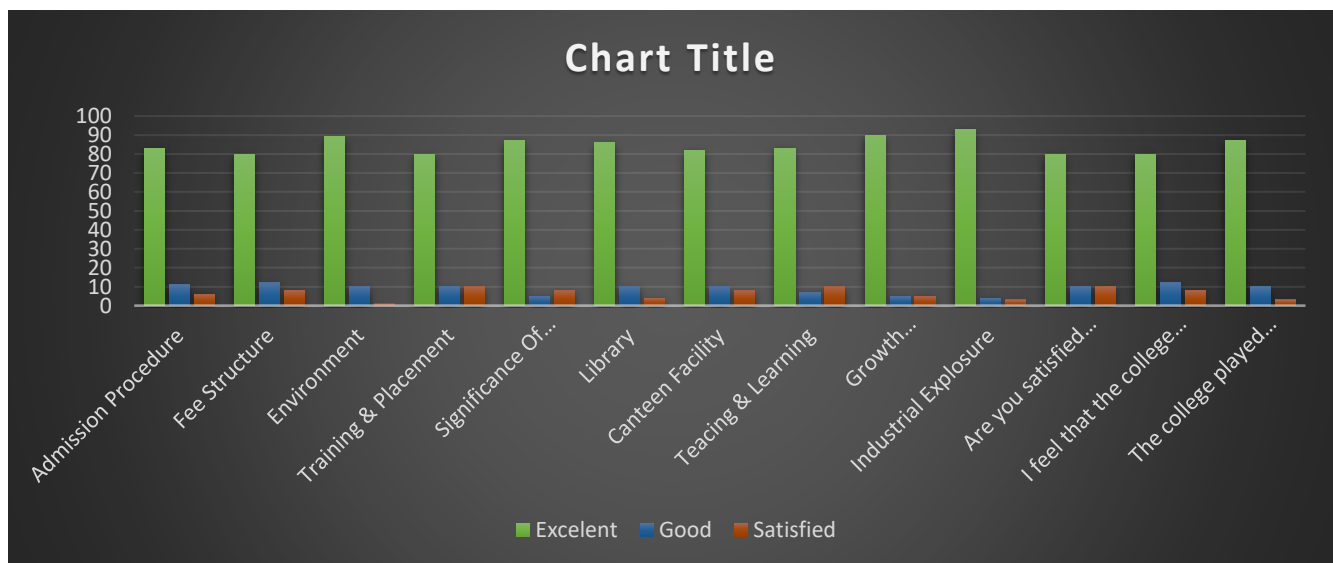
# Computer Science Department

S.No.	How satisfied are you with the student/s work performance in	Excelent	Good	Satisfied
1	Admission Procedure	80	12	8
2	Fee Structure	80	5	15
3	Environment	85	12	3
4	Training & Placement	79	10	12
5	Significance Of Course That You Had Learnt In Relation To Your	88	8	4
6	Library	82	10	8
7	Canteen Facility	85	10	5
8	Teacing & Learning	82	8	10
9	Growth Opportunities For Student	90	5	5
10	Industrial Explosure	79	11	10
11	Are you satisfied with the efforts taken by the College to connect	92	6	2
12	I feel that the college taught me some valuable lessons in character	86	10	4
13	The college played an important role in increasing my level of	78	12	10
14	Infrastructure	92	4	4



# Interior Design Department

S.No.	How satisfied are you with the student/s work performance in	Excelent	Good	Satisfied
1	Admission Procedure	83	11	6
2	Fee Structure	80	12	8
3	Environment	89	10	1
4	Training & Placement	80	10	10
5	Significance Of Course That You Had Learnt In Relation To Your	87	5	8
6	Library	86	10	4
7	Canteen Facility	82	10	8
8	Teacing & Learning	83	7	10
9	Growth Opportunities For Student	90	5	5
10	Industrial Explosure	93	4	3
11	Are you satisfied with the efforts taken by the College to connect	80	10	10
12	I feel that the college taught me some valuable lessons in character	80	12	8
13	The college played an important role in increasing my level of	87	10	3
14	Infrastructure	89	7	4





# Education Department

S.No.	How satisfied are you with the student/s work performance in	Excelent	Good	Satisfied
1	Admission Procedure	80	12	8
2	Fee Structure	80	5	15
3	Environment	85	12	3
4	Training & Placement	79	10	12
5	Significance Of Course That You Had Learnt In Relation To Your	88	8	4
6	Library	82	10	8
7	Canteen Facility	85	10	5
8	Teacing & Learning	80	12	8
9	Growth Opportunities For Student	94	6	0
10	Industrial Explosure	74	10	16
11	Are you satisfied with the efforts taken by the College to connect	90	4	6
12	I feel that the college taught me some valuable lessons in character	85	12	3
13	The college played an important role in increasing my level of	82	12	6
14	Infrastructure	80	15	5





